



This Issue

- Truck for Sale p2
- Annual Meeting Prize Winners p3
- Board Report p4



Mark Your Calendar

- May 15. Electric Bills Due
- May 27 Memorial Day Office Closed
- May 28 Board Meeting



Find Your Account Number & Win!

TEC has hidden an account number in this newsletter. If you find your account number, notify us by April 1st and you will get a **\$10 bill credit**.

Congratulations **Tom Zych** on finding his account number in our April issue.

Amsden Piotter Selected to Attend the 2024 Washington DC Youth Tour

Amsden Piotter, son of Dan and Amy Piotter of New Effington, SD was selected to attend this year's Washington DC Youth Tour, June 18-23, 2024. Amsden is a student at Rosholt High School in Rosholt, SD. Amsden wrote an essay on the topic "What moment in American History do you wish you had been a part of, and what would you have contributed?" Amsden's essay titled "The Space Race" was written about the Space Race between the United States and the Soviet Union to be the first to explore the unknown.

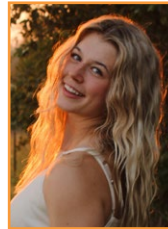


Congratulations to All 2024 Scholarship Recipients!



\$1,000 Basin Electric Scholarship Recipient: **Sienna Klein**

Sienna Klein of Rosholt, SD is the daughter of Jeremiah and Lisa Klein and is a senior at Rosholt High School.



After graduation, Sienna plans to attend Grand Canyon University in Phoenix, AZ to further her education in Human Resources.

\$500 Traverse Electric Scholarship Recipient: **Beth Powers**

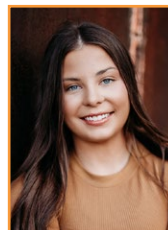
Beth Powers of Dumont, MN is the daughter of Steve and Kelli Powers and is a senior at Clinton-Graceville-Beardsley High School.



After graduation, Beth plans to attend Minnesota State University, Mankato in Mankato, MN to further her education in Communication Sciences & Disorders and Psychology.

\$500 Traverse Electric Scholarship Recipient: **Hannah Levenson**

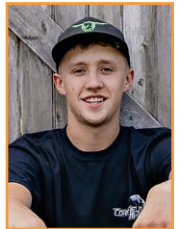
Hannah Levenson of Sisseton, SD is the daughter of Timothy and Jessica Levenson and is a senior at



Sisseton High School. After graduation, Hannah plans to attend Minnesota State University, Mankato in Mankato, MN to further her education in Exercise Science and Sports Medicine.

\$500 Traverse Electric Scholarship Recipient: **Hunter Hanson**

Hunter Hanson of Sisseton, SD is the son of Benjamin and Carrie Hanson and is a senior at Sisseton High School. After graduation, Hunter plans to attend Lake Area Technical College in Watertown, SD to further his education in Diesel Technology.



\$500 Traverse Electric Scholarship Recipient: **Rachel Hormann**

Rachel Hormann of Wheaton, MN is the daughter of Michael and Jodi Hormann and is a senior at Wheaton Area High School. After graduation, Rachel plans to attend Lake Area Technical College in Watertown, SD to further her education in Financial Services and Agri-Financial Services, Business Accounting, and Consumer Financial Services.



Truck For Sale

2006 Dodge Ram 3500 Big Horn Edition Crew Cab truck with electric dump box. 193,196 miles, Hemi 5700 V8 gas engine, mechanically sound. All regular maintenance completed. Please call Dale Schwagel at 800-927-5443 for more info. or to schedule a time to view the truck. Please submit your sealed bid to Traverse Electric Co-op, Attn: Dale Schwagel, PO Box 66, Wheaton, MN 56296 by May 24, 2024. Minimum bid accepted is \$5000 *Traverse Electric Co-op reserves the right to accept or reject any and all bids.*



ENERGY EFFICIENCY TIP OF THE MONTH

A well-designed landscape can add beauty to your home and reduce home heating and cooling costs. Plant deciduous trees with high, spreading crowns to the south of your home to block sunlight in the summer and reduce the need for air conditioning. Deciduous trees lose their leaves in the winter, allowing sunlight to warm your home.

Plant evergreen trees and shrubs with low crowns to block winter winds. Dense evergreen trees and shrubs planted to the north and northwest are the most common type of windbreak and can help lower energy used for home heating.

Source: energy.gov



As you prepare for planting season, don't forget to plan for safety. Keep these safety tips in mind:



TRAIN OTHERS

Train anyone working on your farm, including family members and seasonal workers, about electrical hazards.

SAFETY FIRST

Have daily meetings to review the day's work. Know and review where the power lines are, the clearance required and the proper position of extensions as they are transported.



WAIT TO UNFOLD

Remind workers to fold or unfold extensions well into the field, not close to the field's edge where power lines are typically located.

USE A SPOTTER

When working in the vicinity of power lines, always have a spotter on the ground who can direct you away from power lines or poles if you are getting too close.

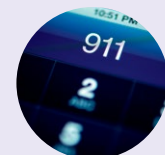


DO NOT EXIT YOUR CAB

If your machinery or truck makes contact with a power line, pole or guy wire, you could become electricity's path to ground and become electrocuted if you step out of the cab.

CALL 9-1-1

Call 9-1-1 to have your electric utility dispatched to deenergize the power source. Only exit the cab if your equipment is on fire. If that happens, make a solid jump out and hop away with your feet together as far as you can.

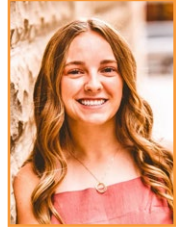


Scholarship Recipients

continued from page 1

\$500 Traverse Electric Scholarship Recipient: Emmy Anderson

Emmy Anderson of Graceville, MN is the daughter of Benjamin and Trisha Anderson and is a senior at Clinton-Graceville-Beardsley High School. After graduation, Emmy plans to attend Minnesota State University, Mankato in Mankato, MN to further her education in Dental Hygiene.



\$500 Traverse Electric Scholarship Recipient: Sophia Moen

Sophia Moen of Sisseton, SD is the daughter of Rick and Jessica Moen and is a senior at Sisseton High School. After graduation, Sophia plans to attend the University of Sioux Falls, in Sioux Falls, SD to further her education in English and Theology.



2023 CAPITAL CREDIT CHECKS

INVALID ADDRESS LIST

#29601

Name	Address	Yrs in Service
Doreen Diekmann Abrahamson	Willmar MN	1991-2008
Jed Ahrenholz	Rosholt SD	2008
Darren & Stephanie Ammons	Tintah MN	2007-2010
Joey Bombeck	New Effington SD	2006-2011
Kayleen Bonczek	N St Paul MN	1987-2000
Richelle L Brennan	Chanhassen MN	1999
Paulette Cloud Estate	Sisseton SD	2006-2007
Country Wide Home Loans	Plano TX	2001-2002
Sampson Demarrias	Sisseton SD	1988-1993
Lynnette Egen	Watertown SD	1995
Judith Flett	Roseville MN	1999-2003
Gordon Gast	Campbell MN	1999-2008
Jared Goodsell Estate	Sisseton SD	2005-2007
Thomas & Barbara Hasbrouck	Sartell MN	1982-1991
Roger Hom	Forman ND	1994-2002
Curt & Sandi Hove	Moorhead MN	2002
Claudia Keeble	Browns Valley MN	1993
Jillisa Lesmann	Wyndmere ND	2007-2008
Ione Renville Lufkins Estate	Sisseton SD	2004-2008
Phil Lufkins Estate	Sisseton SD	2006-2008
Dr James McCabe Jr	Valdez AK	2008-2012
Kristofer L Morgan	Tintah MN	2001-2009, 2013-2023
Sean Murphy	Browns Valley MN	2008-2010
Francis Nebben	Clinton MN	1999-2010
Dan Sauve	Bagley MN	1996
Judy Simons	Lansing MI	1999-2012
Richard Wadleigh	Sisseton SD	2008-2010

Congratulations to our annual meeting prize winners!

\$100 credit – Raymond & Nancy Pansch

\$50 credit – James & Loretta Kruger

\$50 credit – John Zettel

\$25 credit – Eddie & Diann Madsen

\$25 credit – Renee Schwebach

\$25 credit – Steve & Lynn Johnson

\$25 credit – Bob Lee

BBQ grilling tool & spice set – Walter Braun

Outdoor LED wind spinner – Erin Braun

Car Emergency Kit – Dennis Elton

Soft Side Cooler – Ben Anderson

2 Pack surge protector power strips –

Dennis & Lois Sumerfelt

Home tool kit – Gerald Heck

Gardening tool kit – Tom Zych

Cutting board Set – Randy Wieser

Digital Weather Station – Ron Lick

Zero Gravity Chair – Jerome & Nina Borgen

Electric Lunch Box (donated by East River) –

Shawn Witte

Solar Flood Lights – Carol Johnson

Grand Prize: Table top Blackstone Griddle –

Adam Lichtsinn

March 2024 Traverse Electric Board Meeting Highlights

The March regular board meeting was held on Wednesday, March 27, 2024 at 9 AM. Absent: None.

Staff members present were General Manager, Jeremy Huhnstock, Dale Schwagel, and Karen Lupkes.

General Manager Huhnstock called the meeting to order and facilitated the reorganization of the board to elect a board president.

Board officers elected: Diekmann-President, Frisch-Vice President, Glynn-Secretary, Marks-Treasurer.

The agenda was approved.

The minutes of the February regular board meeting were approved.

The February check register was approved.

Discussed the East River and Basin Electric video reports.

Diekmann gave an East River Board Report.

Diekmann reported on the MREA Annual Meeting.

Huhnstock presented the General Manager's Report, which included:

- ▶ Provided a Basin Electric update.
- ▶ Provided an East River update.
- ▶ REED Fund review.
- ▶ NRECA update.
- ▶ MREA and MN legislative update.
- ▶ SDREA and SD legislative update.

Lupkes gave the Office Manager's Report, which included:

- ▶ February 29, 2024 accounts receivable balances were reviewed.
- ▶ A list of new members was reviewed.

- ▶ Update on Electrical Dept. and Generator Program.
- ▶ East River power bill and Basin's financial reports reviewed.
- ▶ Annual audit is scheduled for the week of May 13.

Reviewed and approved the February 2024 Financial Report.

Schwagel presented the Operations Report per written report. Items discussed included:

- ▶ Provided a crew update.
- ▶ Reviewed upcoming and completed projects.
- ▶ 1,900 poles will be tested in SD this year.
- ▶ Carr's Tree Service plans to begin trimming trees in areas of SD in April.
- ▶ Traverse Electric was awarded the MN Governor's Work Place Safety Award.
- ▶ Reviewed our Safety Program.
- ▶ Outages were reviewed.

Received an update on the new facility. Received an update on the old properties for sale.

Reviewed our annual meeting held on March 21, 2024.

Accepted the 2023 Service Reliability Report.

Reviewed Policy 106.

Reviewed Policy 109.

Approved a donation to send MN line workers to assist with electrifying Guatemala.

Reviewed upcoming meetings and attendees.

Meeting adjourned. ▶

BOARD OF DIRECTORS

President: Doug Diekmann, Beardsley, MN
 Vice-President: Tom Frisch, Dumont, MN
 Secretary: Matthew Glynn, Sisseton, SD
 Treasurer: Michael Marks, Norcross, MN
 Stacy Ehlers, Wheaton, MN
 Michael Gaulrapp, Breckenridge, MN
 Jared Hamling, Rosholt, SD
 Terry Monson, Veblen, SD
 Bradley Rudolph, Dumont, MN

OFFICE PERSONNEL

Jeremy Huhnstock – General Manager
 Karen Lupkes – Office Manager
 Dale Schwagel – Operations Manager
 Melissa Przymus – Accountant
 Stacie Johannsen – Billing Clerk

OPERATIONS PERSONNEL

Richard Davis – Foreman
 Lonnie Tekrony – Journeyman Lineworker
 Joe Gahlon – Journeyman Lineworker
 Austin Reinke – Journeyman Lineworker
 Justin Lundblad – Apprentice Lineworker
 Isaac Callens – Apprentice Lineworker
 Tayden George – Apprentice Lineworker
 Chris Falk – Facility/Staking Technician
 Robert Groebner – Facility Technician

GENERAL MANAGER'S CONTACT INFORMATION

Jeremy Huhnstock
 Cell: 320-349-9901 | Direct: 320-563-1055
 jhuhnstock@traverseelectric.com

MEMBER SERVICE REP/ MASTER ELECTRICIAN

Steve Powers 320-808-9104
 Connor Bartz
 – Journeyman Electrician 320-287-0009

ELECTRICAL INSPECTORS MINNESOTA

Brandon Lennox 320-808-5309
 Big Stone County Grant County
 Stevens County Traverse County
 Rodney Schaffer 701-235-2840
 Wilkin County

NORTH DAKOTA

Mark Moderow 701-226-3779
 Richland County

SOUTH DAKOTA

Seth Warner 605-500-9020
 Marshall County Roberts County

In case of a power outage, call
(800) 927-5443

6590 State Highway 27
 P.O. Box 66

Wheaton, MN 56296 USA

Toll-free phone: (800) 927-5443

Local phone: (320) 563-8616

Hours of Operation

Monday through Friday, 7 a.m.–3:30 p.m.
 May 1-Sept 30

Web site: www.traverseelectric.com

This institution is an equal opportunity provider and employer.

Our Mission: To provide dependable service at the lowest possible rates, consistent with sound business principles.

TEC March 2024 Financials

	Mar 2023	Mar 2024	YTD 2024
Total Revenue	\$1,055,905.60	\$1,071,187.97	\$3,378,179.37
Cost of Power	\$616,847.73	\$656,414.74	\$2,064,437.13
Total Cost of Service	\$967,798.59	\$1,113,369.44	\$3,262,116.17
Operating Margins	\$88,107.01	\$(42,181.47)	\$116,063.20
Total Margins	\$125,114.73	\$(10,181.01)	\$161,825.81
Kilowatt-Hours (kWh) Purchased	11,484,532	11,351,185	35,980,338
Kilowatt-Hours (kWh) Sales	10,914,046	10,844,955	34,299,425
Line Loss	4%	4%	4%