

**AGENDA**  
**REGULAR MONTHLY MEETING-BOARD OF DIRECTORS**  
**TRAVERSE ELECTRIC COOPERATIVE, INC.**  
**Tuesday, July 28, 2020**  
**8:00 AM**

- 1). Call to order – *Alan Veflin, President*
- 2). Reorganization of the Board: Elect President\*\*\*, Vice President\*\*\*, Secretary\*\*\*, Treasurer\*\*\*
- 3). Approval of Agenda \*\*\*
- 4). Approval of Minutes and Bills \*\*\*
- 5). Basin & East River Video Reports
- 6). East River Monthly Board Report - *Homan*
- 7). District III Meeting – *Armstrong, Marks*

**10 Minute Break**

- 8). General Manager's Report – *Janorschke*
  - a. Basin Electric
  - b. East River
  - c. REED
  - d. NRECA
  - e. MREA/MN
  - f. SDREA/SD
  - g. Other Matters of Interest
- 9). Office Manager's Report – *Lupkes*
  - a. June 30, 2020 Accounts Receivable Balances review
  - b. Review new members connected
  - c. Covid-19 Update
  - d. Past Due Accounts affected by COVID-19
  - e. MN unclaimed capital credits
  - f. Wheaton-Dumont Elevator-Graceville site
  - g. New billing statement design update
- 10). Financial Report – *Lupkes*
  - a. Profit & Loss Statement & Form 7\*\*\*
  - b. Comparison
  - c. Review QTR 2 Budget Analysis
  - d. Review QTR 2 Capital Budget Analysis
  - e. Review QTR 2 kWh Sales Budget Analysis
- 11). Operation Manager's Report – *Janorschke*
  - a. Crew update

**AGENDA**  
**REGULAR MONTHLY MEETING-BOARD OF DIRECTORS**  
**TRAVERSE ELECTRIC COOPERATIVE, INC.**  
**Tuesday, July 28, 2020**  
**8:00 AM**

- b. AMI update
- c. Miscellaneous
- d. Safety
- e. Outage update

12). Annual Meeting Review

13). East River Annual Meeting

- a. September 9, 2020
- b. Will limit the in-person attendance too:
  - o ER Director - Homan
  - o General Manager
  - o Delegate - Marks
  - o Resolution Committee Representative -Armstrong

14). ERC loan request for Kirk Akerson of Rosholt, SD for a new heat pump. He is requesting \$4,400.00 at 5% for 84 months\*\*\*

15). Executive Session

- a. General Manager Performance Review

16). Other Business

17). Adjournment \*\*\*

\*\*\* Indicates Board Action needed

*Future Directors Meetings*

- ❖ *ER Joint Strategic Planning – August 4, 2020 – Madison, SD; Homan*
- ❖ *ER Board of Directors Meeting – August 5, 2020 – Madison, SD; Homan*
- ❖ *NRECA BLC 925.1 – Co-op bylaws; Guiding principles and current issues – August 18, 2020 – St. Paul, MN*
- ❖ *MREA EIS / Annual Meeting Update – August 19-20, 2020 – Bloomington, MN; Armstrong, Frisch, Marks*
- ❖ *ER Annual Meeting – September 9, 2020 – Sioux Falls, SD; Armstrong (Resolution Committee), Homan, Marks (Delegate), Veflin (Alternate)*
- ❖ *ER Board of Directors Meeting – September 10, 2020 – Sioux Falls, SD*
- ❖ *NRECA Region 5 & 6 Meeting – September 15-17, 2020 – Virtual Meeting*
- ❖ *ER MAC/BOD Joint Budget Meeting – September 30, 2020 – Madison, SD*
- ❖ *ER Board of Directors Meeting – October 1, 2020 – Madison SD*
- ❖ *NRECA BLC 977.1 Equity Management & Boardroom Decision Making – November 2, 2020 – Oronoco, MN*
- ❖ *Basin Annual Meeting – November 3-5, 2020 – Bismarck, ND*
- ❖ *TEC 8<sup>th</sup> Annual Meeting - March 25, 2020 – Wheaton High School*

*Future Managers Meetings*

- ❖ *ER MAC Meeting – August 3, 2020 – Madison, SD*
- ❖ *ER Joint Strategic Planning – August 4, 2020 – Madison, SD*
- ❖ *MREA EIS/Annual Meeting Update – August 19-20, 2020 – Bloomington, MN*

**AGENDA**  
**REGULAR MONTHLY MEETING-BOARD OF DIRECTORS**  
**TRAVERSE ELECTRIC COOPERATIVE, INC.**  
**Tuesday, July 28, 2020**  
**8:00 AM**

- ❖ *MREA REMA CEOs Fall Conference – August 9-11, 2020 – Red Wing, MN*
- ❖ *ER Annual Meeting – September 9, 2020 – Sioux Falls, SD*
- ❖ *NRECA Region 5 & 6 Meeting – September 15-17, 2020 – Virtual Meeting*
- ❖ *Basin Member Managers Meeting – 17-18, 2020 – Rapid City, SD*
- ❖ *ER MAC/Joint Budget Meeting – September 30, 2020 – Madison, SD*
- ❖ *Basin Annual Meeting – November 3-5, 2020 – Bismarck, ND*
- ❖ *ER MAC Meeting – November 10, 2020 – Madison, SD*
- ❖ *MREA Legislative Summit – November 12, 2020 – Maple Grove, MN*
- ❖ *ER MAC Meeting – December 1, 2020 – Madison, SD*
- ❖ *TEC 81<sup>st</sup> Annual Meeting – March 25, 2021 – Wheaton High School*

*Future Board Meeting Dates*

- ❖ *August 25, 2020 – Scheduled for 8:00 am*
- ❖ *September 29, 2020 – Scheduled for 8:00 am*
- ❖ *October 27, 2020 – Scheduled for 9:00 am*
- ❖ *November 24, 2020 – Scheduled for 9:00 am*
- ❖ *December 29, 2020 – Scheduled for 9:00 am*

*Future NRECA Annual Meeting Dates*

- ❖ *2021 - San Diego - February 18-24; Homan, Kath*
- ❖ *2022 - Nashville - March 3-9; Armstrong, Diekmann*
- ❖ *2023 - Nashville - March 2-8; Monson, Pearson*
- ❖ *2024 - San Antonio - Feb. 27-March 6*
- ❖ *2025 - Atlanta - Feb. 27-March 5*
- ❖ *2026 - Nashville - March 5-11*

**REGULAR MONTHLY MEETING-BOARD OF DIRECTORS  
TRAVERSE ELECTRIC COOPERATIVE, INC.  
Tuesday, June 30, 2020  
8:00 AM**

The June monthly meeting of the Board of Directors of Traverse Electric Cooperative, Inc. was held at the Cooperative on Tuesday, June 30, 2020.

President Veflin called the meeting to order.

The Secretary reported the following directors present:

Alan Veflin	Terry Monson	Pat Homan
Michael Marks	Russ Armstrong	Doug Diekmann
Mark Pearson	Tom Frisch	Karen Kath

Absent was: None.

Staff members attending the meeting were Joel Janorschke and Karen Lupkes.

Marks made a motion to approve the agenda as presented. Kath seconded the motion and upon vote, motion carried unanimously.

The minutes from the May Board of Directors meeting and the bills for May were presented. Pearson made a motion to approve the minutes and the May bills. Diekmann seconded the motion and upon vote, motion carried unanimously.

The Basin and East River video reports were viewed by board members individually at home.

Homan reported on the East River Board Meeting:

- Basin and DGC were discussed.
- Basin's load from the oil fields is down, but coming back.
- East River sales are down 5.4% compared to last year.

Manager Janorschke presented the Manager's Report:

- Reviewed the format of our annual meeting on July 27 from 3:30-7:00 PM.
- Discussed Basin's DGC loss of \$5.6 million in May and a new 150MW solar project in Montana.
- Provided an East River update. Discussed green credits, the Keystone Pipeline, Tri-State G&T, and Great River Energy (Coal Creek Station).
- Reviewed the REED Fund program and new loans.
- Provided an NRECA update. Reviewed the \$3 trillion relief package. Refinancing RUS loans was not included.

- Provided an update on MREA and MN Legislation. MREA hired a person for communications. Governor Walz's peacetime emergency goes until July 13. MN recognizes June 10<sup>th</sup> as Freedom Day. The MN Dept. of Revenue sent a letter to co-ops regarding paying property taxes on security lights. The ECO Act will be heard at a special session. MREA will continue to push for the load control receiver issue.
- Provided an SDREA and SD legislative review. The Line Patrol Charity Ride is cancelled due to COVID-19. Governor Noem declared June 10<sup>th</sup> Day in South Dakota to recognize the end of slavery.
- Other matter of interest:
  - Discussion was held on an irrigation site that has had four VFD's burn up. Our engineer at STAR Energy installed a voltage recorder and found no issues. Our engineer will install a voltage recorder again on this service. The member is requesting Traverse Electric to reimburse him for the replacement VFDs, which are about \$7,000 each.
  - Janorschke also discussed that he met with a member who had questions on his electric bill and submeter, that his electrician, Tim Hoffman, discovered he had wired it wrong years ago and the submeter reported two times the number of kwhs it should have. Hoffman corrected it. Janorschke explained this to the member.
  - Janorschke reminded the board that the general manager's performance review is scheduled for July 28, 2020 at next month's board meeting.

Miranda Wendlandt from CliftonLarsonAllen joined the meeting via Zoom to present the annual audit report. Ms. Wendlandt reviewed the financial report, key ratios, and comparisons to other MN Co-ops and East River Co-ops. There were no findings and they issued a clean audit report. After all board questions were answered by Wendlandt, Homan made a motion to approve the audit report as presented. Armstrong seconded the motion and upon vote motion carried unanimously.

Lupkes presented the Office Manager's Report per written report:

- May31, 2020 Accounts Receivable balances were reviewed. One account in SD was disconnected in June and reconnected the same day with payment arrangements. Two accounts in SD that were disconnected in May are still disconnected with no contact from them.
- New members connected were reviewed.
- Our lobby remains closed. We plan to reopen in the next couple of weeks. To date, no employee has contracted COVID-19. With the implementation of a COVID-19 Response Plan, all visitors complete a self-health screening questionnaire, sanitize their hands, and wear a mask. A sneeze guard will be placed at the front desk.
- We will continue to work with past due members to make payment arrangements. About twelve members have called and reported that COVID-19 is affecting their ability to pay. We do not apply late penalty to overdue balances, and do not charge any fees. The expansion of energy assistance programs has helped quite a few households.

- Our annual audit went well. It was conducted remotely this year. The auditors commented that they felt it went very well.
- Reviewed the process for unclaimed capital credits. For SD members, unclaimed capital credits go to the State of SD. In MN, unclaimed credits can be donated to a charitable organization. Last year's MN unclaimed credits were donated to local MN fire departments that serve our area. This year, we plan to donate the unclaimed credits to area volunteer ambulance services in MN. The amount varies each year.
- Reviewed a few notes to the May balance sheet including the East River and Basin Electric retirement of capital credits, the loan for North Ottawa Dairy, and the Co-Bank loan that will be paid off in June.

Lupkes presented the financial report for May 2020. After a discussion on the monthly comparisons and financial status of the Cooperative, Monson made a motion to accept the report as given. Frisch seconded the motion, and upon vote motion carried unanimously.

Janorschke gave the Operations Report per Schwagel's written report.

- Crews have been working on pole changes.
- Projects were reviewed.
- Pole inspection is done, with 2,268 poles tested, 191 were rejected.
- Discussed the Hwy 75 ditch project.
- DOT trailer inspection is complete.
- Review of our safety program.
- Colden Herberg completed the new employee orientation.
- Three crew observations were done.
- North Ottawa Dairy started milking on May 15.
- The outage reports were reviewed.

Our director seat on the East River Board of Directors is up for renewal. It is a three-year term. Marks made a motion to nominate Pat Homan for the East River Board of Directors. Kath seconded the motion and upon vote motion carried unanimously.

East River is requesting a board member to serve on the East River Resolutions Committee. Diekmann made a motion for Russ Armstrong to serve on the Resolutions Committee. Pearson seconded the motion and upon vote motion carried unanimously.

East River's annual meeting will be held September 9 in Sioux Falls. Monson made a motion to make Marks our East River voting delegate and Veflin the alternate. Frisch seconded the motion and upon vote motion carried unanimously.

The MREA EIS/Annual Meeting attendance is capped at 200 people. Armstrong, Frisch, and Marks plan to attend.

Other business:

Next board meeting will be on Tuesday, July 28, 2020 beginning at 8 AM.

Upcoming Board Member meetings:

ER board meeting – July 2, 2020 – Madison, SD - Homan  
 MN District III Meeting – July 9, 2020 – Alexandria, MN – held online - Armstrong, Marks  
 TEC 80<sup>th</sup> Annual Meeting – July 27, 2020 – TEC office  
 ER board meeting – August 5, 2020 – Madison, SD – Homan  
 NRECA BLC 925.1 – Co-op Bylaws: Guiding Principles and Current Issues – August 18, 2020 – St. Paul, MN  
 MREA Annual Meeting/ Energy Issues Summit – August 19-20, 2020 – Bloomington, MN- Radisson Blue @ Mall of America – Armstrong, Frisch, Marks  
 East River Annual Meeting – Sept. 9, 2020 – Sioux Falls, SD- Armstrong, Marks, Velfin  
 ER board meeting – Sept 10, 2020 – Sioux Falls, SD  
 NRECA Region 5 & 6 Meeting – Sept. 15-17, 2020 – Des Moines, IA – virtual meeting  
 ER MAC/BOD Joint Budget Meeting – Sept 30, 2020 – Madison, SD  
 ER board meeting – Oct. 1, 2020 – Madison, SD  
 NRECA BLC 977.1 Equity Management & Boardroom Decision Making – Nov 2, 2020 - Oronoco, MN  
 Basin Annual Meeting – Nov 3-5, 2020 – Bismarck, ND  
 NRECA CCD Fast Track 2600, 2610, 2620 – Nov 17-19, 2020 – Maple Grove, MN  
 NRECA CCD Fast Track 2630, 2640 – Dec 1-2, 2020 – Brooklyn Park, MN  
 TEC 81<sup>st</sup> Annual Meeting – March 25, 2021 – Wheaton High School

Upcoming Managers Meetings:

MN District III Meeting – July 9, 2020 – Alexandria, MN - *online*  
 East River MAC Meeting – Aug. 4, 2020 - Madison, SD  
 SDREA Managers Meeting – July 15-16, 2020 – Pierre, SD  
 TEC 80<sup>th</sup> Annual Meeting – July 27, 2020 – TEC office  
 East River MAC Meeting – Aug 4, 2020 – Madison, SD  
 MREA Annual Meeting/Energy Issues Summit – Aug. 18-19, 2020 – Bloomington, MN-Radisson Blue @ Mall of America  
 MREA REMA CEOs Fall Conference – Aug 9-11, 2020 – Red Wing, MN  
 East River Annual Meeting – Sept. 9, 2020 – Sioux Falls, SD  
 NRECA Region 5 & 6 Meeting – September 15-17, 2020- Virtual Meeting  
 Basin Member Managers Meeting – Sept. 17-18, 2020 – Rapid City, SD  
 East River MAC Meeting/Joint Budget Meeting – Sept. 30, 2020 – Madison, SD  
 Basin Annual Meeting – Nov 3-5, 2020 – Bismarck, ND  
 ER MAC Meeting – Nov 10, 2020 – Madison, SD  
 MREA Legislative Summit – Nov. 12, 2020 – Maple Grove, MN  
 ER MAC Meeting - Dec 10, 2020 – Madison, SD  
 TEC 81<sup>st</sup> Annual Meeting – March 25, 2021 – Wheaton High School

As there was no further business, Kath made a motion to adjourn. Diekmann seconded the motion and upon vote motion carried unanimously. Meeting adjourned at 10:26 AM.

---

Mark Pearson, Secretary



## CM - Check Register-Detail

**1 Cash - General Fund**

<u>Type</u>	<u>Date</u>	<u>Chk Nbr</u>	<u>Name</u>	<u>Total Check Amount</u>	<u>Document Detail</u>
CK	06/01/2020	116860	PROFESSIONAL COMPUTER SOLUTIONS LLC Mobile Customer Access for April	717.25	50.00
			Allocation Notice Template File Setup		667.25
CK	06/01/2020	116861	Irby (Stuart C. Irby Company) Headlamp	3,837.73	571.63
			8 RF PDR Meters		2,992.50
			Bolt Cutter		273.60
CK	06/01/2020	116862	AT&T 800 Service	20.74	20.74
CK	06/01/2020	116863	Integrity Contracting Inc Single Phase Boring - Rodd Beyer	5,600.00	1,520.00
			Single Phase Boring - Mathias Tile Service		2,240.00
			Single Phase Boring - Jody Coleman		1,840.00
CK	06/01/2020	116864	Dairyland Power Cooperative Inc March Billing/Pstg, April Past Due, 2019 Allo	3,324.82	3,324.82
CK	06/01/2020	116865	White Rock Colony 4 Heat Pump Rebates @ \$600/ea	2,400.00	2,400.00
CK	06/01/2020	116866	Emily Kaufman TEC \$500 Scholarship	500.00	500.00
CK	06/01/2020	116867	Ag-News Advert - MN Ag News	195.00	195.00
CK	06/01/2020	116868	Altec Industries, Inc. Platform Repairs #143	743.95	743.95
CK	06/01/2020	116869	Frontier Office Phone & DSL Service	234.39	234.39
CK	06/01/2020	116870	NRECA Admin Fee	109.88	109.88
CK	06/01/2020	116871	FURTHER June HSA Employee Contributions	1,370.01	1,370.01
CK	06/01/2020	116872	East River Federal Cu June Credit Union	875.00	875.00
CK	06/01/2020	116873	I.B.E.W. Lu 524 June Union Dues	200.00	200.00
CK	06/01/2020	116874	NRECA Trust Contributions	14,460.95	14,460.95
CK	06/01/2020	116875	Delta Dental of Minnesota June Premiums	1,129.95	1,129.95
CK	06/01/2020	116876	NRECA Group Benefits Trust Group Ins	1,477.10	1,477.10
CK	06/01/2020	116877	NRECA Admin Fees	798.57	798.57
WT	06/01/2020	8801590	Minnesota Dept Of Revenue May 31, 2020 payroll SWH	1,725.16	1,725.16
WT	06/02/2020	8801589	Internal Revenue Service May 31, 2020 payroll FICA & FWH	9,977.40	9,977.40
WT	06/03/2020	8801591	Natl Rural Elec Assn May 31, 2020 payroll 401K loan	5,791.67	113.81
			May 31, 2020 payroll 401K		5,677.86
WT	06/05/2020	8801592	Payment Service Network Inc	1,128.44	

## CM - Check Register-Detail

**1 Cash - General Fund**

<u>Type</u>	<u>Date</u>	<u>Chk Nbr</u>	<u>Name</u>	<u>Total Check Amount</u>	<u>Document Detail</u>
			May CC Payment Processing Fees		1,128.44
CK	06/08/2020	116890	Irby (Stuart C. Irby Company)	1,496.25	
			4 PDR Meters		1,496.25
CK	06/08/2020	116891	Marshall County Treasurer	55,398.43	
			SD Gen Tax		55,398.43
CK	06/08/2020	116892	Roberts County Treasurer	80,120.83	
			SD Generation Tax		80,120.83
CK	06/08/2020	116893	Sturdevant's, Inc.	142.84	
			Supplies		142.84
CK	06/08/2020	116894	WILKIN COUNTY RECORDER	6.50	
			Easements Filing Fees for WO#9830		6.50
CK	06/08/2020	116895	Wesco Receivables Corp.	587.39	
			Materials		587.39
CK	06/08/2020	116896	UTILITY INSPECTION SERVICES LLC	31,291.75	
			2020 Pole Inspections - 2163 Tested		31,291.75
CK	06/08/2020	116897	City Of Wheaton	133.40	
			Utilities		133.40
CK	06/08/2020	116898	Chokio Review	30.00	
			Graduation Salute		30.00
CK	06/08/2020	116899	TWIN VALLEY TIRE OF WHEATON INC	40.00	
			Rotate Tires #130		40.00
CK	06/08/2020	116900	Colonial Life	321.86	
			May Colonial Life		321.86
CK	06/08/2020	116901	Pemberton Law PLLP	542.00	
			General Employment Matter		542.00
CK	06/08/2020	116902	First Call Auto Parts Inc	54.79	
			Bug Wash, Parts, Plow Screws		54.79
CK	06/08/2020	116903	Cleon Brooks	50.00	
			Refrigerator Rebate		50.00
CK	06/08/2020	116904	Zee Medical Service	35.80	
			Ibuprofin for First Aid Kit		35.80
CK	06/08/2020	116905	Dymoke Law Office PA	117.50	
			Annual Meeting Options		117.50
CK	06/08/2020	116906	Xerox Corporation	380.48	
			June Copier Lease		380.48
CK	06/08/2020	116907	Morris Electronics Inc	111.60	
			Symantec Anti-Virus - 2 Add'l Licenses		41.60
			Carbonite Support Issue		35.00
			Carbonite Issue		35.00
CK	06/08/2020	116908	NRECA-Coop Benefit Adm	7.50	
			May Cafeteria Expense		7.50
CK	06/08/2020	116909	Mediacom LLC	256.90	
			June Internet Service		256.90
CK	06/08/2020	116910	DEAN GEORGE	87.07	
			CREDIT REFUNDS - 2722 51 -24-1C		87.07
CK	06/08/2020	116911	MARVA J REDTHUNDER	201.91	
			CREDIT REFUNDS - 3477 11596 LAKE RC		201.91
CK	06/08/2020	116912	COLDWELL BANKER CROWN	89.31	
			CREDIT REFUNDS - 28448 32631 190TH S		89.31

## CM - Check Register-Detail

**1 Cash - General Fund**

<u>Type</u>	<u>Date</u>	<u>Chk Nbr</u>	<u>Name</u>	<u>Total Check Amount</u>	<u>Document Detail</u>
WT	06/09/2020	8801595	EAST RIVER FCU	<b>5,165.65</b>	
			ER Credit Card Charges		5,165.65
CK	06/15/2020	116913	Border States Electric	<b>2,213.13</b>	
			Materials		35.75
			Materials		270.50
			LED Light for Hallway & Entry		98.08
			Joel's Office Lighting		342.51
			Joel's Office & Meter Room		5.26
			Materials		327.80
			Materials		15.58
			Credit for Ret'd Face Plates		(4.30)
			Materials		62.33
			Faceplates		4.30
			Materials		0.99
			Materials		27.25
			Materials		965.28
			Material		5.76
			Materials - Inv Calc Error Addition		56.04
CK	06/15/2020	116914	Irby (Stuart C. Irby Company)	<b>580.02</b>	
			4 Stapler Batteries		294.99
			Replacement Hammer Drill #143		172.09
			Glove & Sleeve Testing		112.94
CK	06/15/2020	116915	Otter Tail Power Company	<b>347.16</b>	
			Rental - Jt Use of Poles Roberts Cty		347.16
CK	06/15/2020	116916	SD Rural Electric Ass'n	<b>455.00</b>	
			Newsletter labor & Insert		455.00
CK	06/15/2020	116917	Tri-County Coop	<b>796.71</b>	
			May Fuel, Repair 126, DEF		796.71
CK	06/15/2020	116918	Traverse Elec-Petty Cash	<b>40.52</b>	
			Postage - Replenish Petty Cash		40.52
CK	06/15/2020	116919	Wesco Receivables Corp.	<b>213.75</b>	
			1,000 Lock Nuts		213.75
CK	06/15/2020	116920	Wheaton Area Schools	<b>170.00</b>	
			3-25-21 Annual Mtg Rental Fee		170.00
CK	06/15/2020	116921	KFGO - AM (Midwest Radio of Fargo-Moorhead)	<b>84.00</b>	
			Memorial Day Ads		30.00
			Memorial Day Radio Ads		54.00
CK	06/15/2020	116922	Star Energy Services	<b>8,743.43</b>	
			WO Insp, Map Edits, IT Serv, Safety, Oil Spil		8,743.43
CK	06/15/2020	116923	STREED & HOXTELL	<b>153.50</b>	
			Replace Pipes in New Office		153.50
CK	06/15/2020	116924	Amaril Uniform Company	<b>1,668.71</b>	
			Colden's Gear, Rick/Replacements, Ret'd for S		1,083.12
			5 FR Long Sleeve - Colden		585.59
CK	06/15/2020	116925	Rick's Plumbing, Heating & Air Conditioning Inc	<b>105.00</b>	
			Service Call on Heat Pump		105.00
CK	06/15/2020	116926	Landis & Gyr Technology Inc fka Cellnet Technology	<b>750.00</b>	
			May Meter Hosting		750.00
CK	06/15/2020	116927	Michael Marks	<b>6,243.57</b>	

## CM - Check Register-Detail

**1 Cash - General Fund**

<u>Type</u>	<u>Date</u>	<u>Chk Nbr</u>	<u>Name</u>	<u>Total Check Amount</u>	<u>Document Detail</u>
			Nat'l Annual Mtg, Per Diem, Reg & Travel Ex		6,243.57
CK	06/15/2020	116928	Integrity Contracting Inc	3,920.00	
			Single Phase Boring WO# 9849 - Morrow		1,360.00
			Single Phase Boring WO# 9844 - Gibson		1,120.00
			Single Phase Boring WO# 9833 - Frisch		1,440.00
CK	06/15/2020	116929	Sag's Hardware Hank LLC	173.92	
			Supplies, Took Box for Plow		173.92
CK	06/15/2020	116930	Donna Boehmlehner	154.05	
			Flowers for Pots		154.05
CK	06/15/2020	116931	FRIDGEN EXCAVATING & TILING, LLC	600.00	
			Rock for Pole Change Outs		600.00
CK	06/15/2020	116932	Cenex Fleetcard	3,093.13	
			May Fuel		3,093.13
CK	06/15/2020	116933	Bluecross Blueshield	16,570.37	
			July Premiums Due June		16,570.37
CK	06/15/2020	116934	Dacotah Paper Company	34.64	
			4 Boxes Lens Wipes		34.64
CK	06/15/2020	116935	Verizon Wireless	509.01	
			iPad, Cell & Watch Service		331.17
			Dennis Cell & Linemen iPads		177.84
CK	06/16/2020		Payroll Batch # PR000955	32,041.98	
WT	06/16/2020	8801600	Minnesota Dept Of Revenue	2,200.97	
			June 16, 2020 Payroll SWH		2,200.97
WT	06/17/2020	8801601	Internal Revenue Service	12,116.92	
			June 16, 2020 Payroll FWH & FICA		12,116.92
WT	06/18/2020	8801599	Natl Rural Elec Assn	6,149.49	
			June 16, 2020 Payroll 401K loan		113.81
			June 16, 2020 Payroll 401K		6,035.68
WT	06/19/2020	8801594	SD DEPT OF REVENUE & REGULATION	13,857.03	
			SD Mo 4.5% ST Return		13,857.03
CK	06/22/2020	116936	South Dakota One Call	113.40	
			May SD Locates		113.40
WT	06/22/2020	8801593	CoBank ACB	22,528.66	
			CoBank Mo Princ & Int Pmt - Final		22,528.66
WT	06/22/2020	8801596	Minnesota Sales & Use Tax	24,139.00	
			MN Mo ST Return		24,139.00
CK	06/23/2020	116950	Aflac	13.70	
			June AFLAC		13.70
CK	06/23/2020	116951	Irby (Stuart C. Irby Company)	719.52	
			Colden's Rain Gear		224.15
			Ground Rod Couplings		84.00
			Storage Bag for Rain Gear - Colden		41.33
			Rubber Gloves & Protectors - Colden		370.04
CK	06/23/2020	116952	Gazette Publishing Co.	492.00	
			Grad & Mem Day Sponsor, Generator Ads		492.00
CK	06/23/2020	116953	Basin Electric Power Coop	24.00	
			June Email Hosting		24.00
CK	06/23/2020	116954	Valley Office Products	312.70	
			Lead, Pens, Highlighters, B400 Toner		312.70

## CM - Check Register-Detail

**1 Cash - General Fund**

<u>Type</u>	<u>Date</u>	<u>Chk Nbr</u>	<u>Name</u>	<u>Total Check</u> <u>Amount</u>	Document Detail
CK	06/23/2020	116955	CS DIESEL INC. Replace Inlet air Sensor #130 Clear Fault Codes #143	659.89	521.01 138.88
CK	06/23/2020	116956	Willy's Super Valu Supplies	71.62	71.62
CK	06/23/2020	116957	KFGO - AM (Midwest Radio of Fargo-Moorhead) KFGO Memorial Day Ads KMJO FM Memorial Day Ads D Fargo Digital Client Vendor Listing	315.00	155.00 85.00 75.00
CK	06/23/2020	116958	Amaril Uniform Company 2 Khaki - Replacements - Lon Replacements - Joe, Rick, Lon & Austin	953.76	147.61 806.15
CK	06/23/2020	116959	USIC Locating Services LLC May MN Locates May SD Locates May ND Locates	3,669.88	1,924.00 1,729.88 16.00
CK	06/23/2020	116960	Environmental Systems Research Institute Inc Annual License Fee for Mapping	850.00	850.00
CK	06/23/2020	116961	Joel Johnson Water Heater Rebate	510.00	510.00
CK	06/23/2020	116962	James Rinke Heat Pump Rebate	600.00	600.00
CK	06/23/2020	116963	Zee Medical Service Eye Wash Antiseptic Spray	44.65	28.75 15.90
CK	06/23/2020	116964	CRC Response Center Inc May After Hours Service	1,164.47	1,164.47
CK	06/23/2020	116965	JOHN DEERE FINANCIAL Shipping Charges	117.84	117.84
CK	06/23/2020	116966	Mn Dept Of Commerce 1st Qtr FYE 2021 Indirect Assessment	243.50	243.50
CK	06/23/2020	116967	Big Stone Radio Contracted Radio Advert	159.00	159.00
CK	06/23/2020	116968	Gopher State One-Call May MN Locates	152.55	152.55
CK	06/23/2020	116969	North Dakota One-Call May ND Locates	1.20	1.20
CK	06/23/2020	116970	LegalShield June ID Theft Ins	147.50	147.50
WT	06/26/2020	8801597	Minnesota Sales & Use Tax MN ST Accelerated Payment	21,122.00	21,122.00
CK	06/29/2020	116971	PROFESSIONAL COMPUTER SOLUTIONS LLC Mobiel Cust Access Service June Hosting & User Fees	1,023.00	50.00 973.00
CK	06/29/2020	116972	Irby (Stuart C. Irby Company) Replacement Rain Bibs for Lon	95.14	95.14
CK	06/29/2020	116973	Mn Rural Electric Ass'n Nonrefundable expense for cancelled 2020 Yr	100.00	100.00
CK	06/29/2020	116974	LILLEGARD, INC.	552.58	

## CM - Check Register-Detail

**1 Cash - General Fund**

<u>Type</u>	<u>Date</u>	<u>Chk Nbr</u>	<u>Name</u>	<u>Total Check Amount</u>	<u>Document Detail</u>
			Fuel Filters for #143		213.32
			Replace Axle Seal & Brake Shoes #143		339.26
CK	06/29/2020	116975	Wesco Receivables Corp.	999.07	
			Materials		999.07
CK	06/29/2020	116976	B&B Transformer Inc	10,807.00	
			Regulator Repair		2,751.00
			10 KVA Padmounts		8,056.00
CK	06/29/2020	116977	AT&T	20.78	
			800 Service		20.78
CK	06/29/2020	116978	Dairyland Power Cooperative Inc	1,795.46	
			May Past Due, Print'g, Mail'g April Bill Stmts		1,795.46
CK	06/29/2020	116979	AT & T	42.05	
			800 Service		42.05
CK	06/29/2020	116980	Frontier	234.09	
			Office Phone & DSL Service		234.09
CK	06/29/2020	116981	Mike's Cleaning Service	2,003.91	
			Janitorial Services - April, May & June		2,003.91
CK	06/30/2020	116982	TOM FRISCH	256.90	
			T Frisch - Board Check		256.90
CK	06/30/2020	116983	Russell Armstrong	250.00	
			R Armstrong - Board Check		250.00
CK	06/30/2020	116984	Michael Marks	278.18	
			M Marks - Board Check		278.18
CK	06/30/2020	116985	Alan Veflin	284.50	
			A Veflin - Board Check		284.50
CK	06/30/2020	116986	Douglas Diekmann	258.05	
			D Diekmann - Board Check		258.05
CK	06/30/2020	116987	Mark Pearson	267.25	
			M Pearson - Board Check		267.25
CK	06/30/2020	116988	Pat Homan	273.00	
			P Homan - Board Check		273.00
CK	06/30/2020	116989	Karen Kath	285.65	
			K Kath - Board Check		285.65
CK	06/30/2020	116990	Terry Monson	301.18	
			T Monson - Board Check		301.18
CK	06/30/2020		Payroll Batch # PR000959	31,596.76	
WT	06/30/2020	8801598	USDA, Rural Util. Service	141,185.16	
			Qtr FFB & Mo RUS Princ & Int Pmt		141,185.16
<b>Total</b>				<b>\$619,309.33</b>	

Database: TR PROD

Report:D:\HomeDir\PCS\Reports\PCSCustom\CM-Board Check Register.rpt

Parameters: ( ( {CMDoc.TranType} in ["CK", "MC", "VC", "WT"] AND ( {CMDoc.CheckStatus} <> "C" ) ) AND ( NOT (isnull({CMDoc.BatchID}) ) ) AND ( {CMDoc.BankAcctID} in ['1']) AND ( {CMDoc.TranDate} in Date(2020, 6, 1) to Date(2020, 6, 30))

Last Modified: 7/16/2020

## General Manager's Report

Joel Janorschke

July 28, 2020

### A. Basin Electric Power Cooperative Update

- i. On July 22, 2020, Basin Electric Power Cooperative and a subsidiary of NextEra Energy Resources, LLC, have executed a 30-year power purchase agreement (PPA) with Northern Divide Wind Energy.
  1. Northern Divide will add 200 MW of wind energy to Basin Electric's portfolio, which, includes approximately 1,360 MW of wind, more than 20% of its current total generation capability. Additionally, 200 MW of wind was added when a South Dakota wind project came online in April 2020. The project is in Burke County, ND in the service area of Burke-Divide Electric Cooperative.
- ii. On July 16<sup>th</sup> Basin filed their Rate Schedule A with FERC. Basin again would like members to file motions to intervene and supporting this docket. Filings are due by August 6, 2020.
- iii. Dakota Gasification Company (DGC), reported a loss of \$12.5 million for June compared to a budgeted Loss of \$9.3 million. DGC has a reported Year-To-Date (YTD) loss of \$47.9 million compared to a budgeted YTD margin of (\$4.9 million) through June.
- iv. Basin Electric reported a Consolidated Net margin of \$10.9 million for June compared to the budget amount of a \$2.2 million. Reported YTD margin of \$63.3 million compared to a budgeted margin of \$35.1 million through June.
- v. Tri-State Generation & Transmission (Member of Basin)
  1. A Colorado administrative law judge has recommended that regulators approve an exit fee methodology proposed by United Power that would set the cost for cooperatives to leave the service of Tri-State. The decision comes after a two-year fight involving United Power and LaPlata Electric Association in its bid to leave Tri-State's service and coal-heavy generating mix. The recommended methodology would set a charge of approximately \$235 million for United Power to leave Tri-State's service. Tri-State says that would leave more than \$1 billion in unjust costs split between remaining members in Colorado, Nebraska, New Mexico, and Wyoming.

### B. East River Electric Update

#### a. Great River Energy (GRE) Retires Coal Creek Station:

- i. With GRE's announcement of Coal Creek Station located in Underwood, North Dakota, will be retired in 2022. The retirement directly affects the four Class D members of East River. East River staff will meet with the four Class D Members (Agrialite, Meeker, Redwood and South Central) to discuss this issue on June 17, 2020. The default is that the Class D member will take the replacement power

supply from East River, however there is a clause in the contract that gives an out if the GRE contract is terminated prior to 2045. Currently they have agreed to jointly analyze the projected new load, rate, and associated costs to make sure we understand each other's position.

**b. Outages**

**i. June 4<sup>th</sup> through June 9<sup>th</sup>**

1. 81 Breaker Operations vs 33 Breaker Operations in 2019
2. 37 outages > 5min vs 6 outages > 5min in 2019
3. 12 Supply substations impacted
4. 53 Distribution substations impacted
5. 4 Wheeled load substations impacted
6. 84 poles impacted
7. 3 Substations required repairs
8. Total line damage \$826,000

**C. REED (Rural Electric Economic Development)**

- a. On July 21, 2020, the REED Board reviewed and approved the loans for:
  - i. Town & Country Fire District, Woonsocket, SD; The approval of \$135,000 is for an addition to their existing fire hall that was built in 1979. Town & Country Fire District is in the service territory of Central Electric.
  - ii. Buffalo Ridge Resort, LLC, Gary, SD; The approval of \$226,000 is for the purchase of an existing restaurant and lodging and campground facility. Buffalo Ridge Resort is in the service territory of H-D Electric.

**D. NRECA Update**

- a. NRECA along with Co-ops continue to push congress to pass RUS debt relief in the next COVID-19 stimulus package.
- b. Infrastructure Bill Includes Wind & Solar Tax Extensions, and EV Charging
  - i. A multi-year extension of wind and solar tax credits is part of a newly introduced \$1.5 trillion infrastructure package in the U.S. House. The bill from House Democrats is called the Moving Forward Act and includes an extension of a variety of energy tax credits. The bill would extend wind tax credits for five years and solar tax credits for six years. It would also extend incentives for carbon capture technology and offshore wind projects. The House infrastructure bill includes \$1.4 billion over four years to boost charging and fueling networks for electric, natural gas, propane, and hydrogen vehicles. NRECA is advocating for an amendment that allows electric distribution utilities eligibility for the electric vehicle charging station grant program.
- c. FERC Reforms PURPA Rules and Regulations
  - i. On July 16<sup>th</sup>, The Federal Energy Regulatory Commission (FERC) voted to reform outdated rules and regulations implementing the Public Utility Regulatory Policies Act of 1978 (PURPA). PURPA was enacted more than 40 years ago during a national oil crisis to promote increased energy conservation, efficiency, and the growth of renewable energy. The 1978 law requires investor-owned electric companies, public power utilities, and electric cooperatives to purchase energy from qualifying facilities (QFs) at prices that often exceed the market.



## **E. Minnesota Update**

### **a. MREA**

#### **i. Rural Electric Safety Achievement Program (RESAP)**

1. Originally, we had planned on conducting an unannounced observation, but due to COVID-19 and the potential risks we have decided to schedule the observation for August 27, 2020.
2. RESAP, is a service of NRECA and strives to promote the highest standards of safety among electric cooperatives. The program is based on two fundamental guiding principles that are essential to achieving safety excellence:
  - a. Safety must be embraced as a core value where the actions and decisions of the cooperative reflect a fundamental and unwavering commitment to safety at all levels of the cooperative. This is achieved through a strong safety leadership culture. Cooperative leaders accept responsibility for a culture that ultimately drives safety performance.
  - b. Cooperative leaders and employees take ownership of the systems and processes that create a safe working environment. Safety systems are a shared responsibility and should focus on enhancing safe behaviors and reducing unsafe acts and risks to injury.

### **b. Legislation**

- i. Gov. Walz had asked President Donald Trump on July 2 to declare a "major disaster" in a request to the Federal Emergency Management Agency. A current assessment of damage found more than \$500 million of damages related to the fires. Among the public structures destroyed was a Minneapolis police station that was a focus of the protests. The federal government declined his request for financial support from the Federal Emergency Management Agency (FEMA).
- ii. Governor Walz has extended the COVID-19 Peacetime emergency through August 12, 2020.
- iii. Governor Walz has issued an executive order requiring the use of face masks effective July 25, 2020.
- iv. SF 3962/HF 4249 (Load Control Receiver bill): Continue pushing the load control issue with the Governor's office and hope to make progress through administrative means. Sen. Rarick has agreed to sign onto a letter to the Governor urging him to take administrative action and we are trying to get other legislators to do the same.

**F. SDREA Update****a. SDREA**

- i. Due to the growing concerns for co-op employees from across the state SDREA will not have a booth during the state fair which is held in Huron, SD from September 3-7<sup>th</sup>. They will not lose their location in the expo building.

**b. Legislation**

- i. Representative Steve McCleerey's
  - 1. I will be attending fundraiser held at the Wind Winery, Rosholt on July 31<sup>st</sup>. Representative McCleery represents the Sisseton Area. Managers Tim McIntyre, Lake Region Electric and Dave Page, Whetstone may also be attending.
- ii. SD VW Settlement
  - 1. The draft plan would allow nonprofits, businesses, or government entities to apply for reimbursement up to 50 percent of the cost of a Level 2 or Level 3 fast charger station. The applicant does not have to choose the lowest bid, but the reimbursement will be based on the lowest bidder. The charging stations must be linked to the public 24/7 and must include exclusive parking spaces, signage, and other requirements. The state has access to \$8,125,000 through the settlement and has proposed setting aside 5% of the money, around \$406,000, for the EVCS program.

**G. Other Matters of Interest****a. Bois de Sioux Watershed District (Drainage System)**

- i. On 510<sup>th</sup>/US HWY75 (One-mile South of MN HWY 55) multiple poles tipped over on 7/9. This was due to the widening of the trench. Without notifying the cooperative the Watershed District secured additional R/W along 510<sup>th</sup> St. Last fall they dug the existing trench deeper and extended the width up to our poles. The existing R/W was at 33' ft from centerline where our pole was set at 44' ft from centerline. They have submitted a claim into their insurance carrier. Outage occurred at @ 12:38 am; Reconnected @ 2:02 pm.
- ii. Campbell Dairy
  - 1. Fed from the Doran Substation; unable to back feed from Wendell Sub.

**b. Riverview Dairy – Potential New Site**

- i. Jim Nieland had contacted Dale regarding the installation of a temporary service for test wells for a potential site. The site would be in Dollymount Township and five miles South of their existing Dollymount Dairy site. The facility would be identical to the North Ottawa site which maintains 11,500 head.

**c. Cooperative Current and Future Needs**

- i. Currently three separate facilities
- ii. Parking/Storage
  - 1. No room for additional vehicles
  - 2. Chipper stored outside
- iii. Brick building
  - 1. Structural inspection
- iv. Pole Yard

1. Needs to be fenced in – Estimated cost \$40,000
2. Will lose SQ footage due to fence
3. Maintain area North of pole pile (Cutting Brush)
  - a. Homeowner does want to see pole pile
  - b. Oder of pole treatment

**d. Solar Inquiry**

- i. Bob Kramer – West of Herman

**e. Jerry Murphy**

- i. Jacob from STAR Energy and Steve installed a voltage recorder on July 8<sup>th</sup> and removed on July 21<sup>st</sup>. Member has been burning up VFD's in the spring when he turns on his service after it has sit idle over the winter.



## Media Contact

**JOAN DIETZ**

MANAGER OF COMMUNICATIONS

701.557.5070

701.891.2058

[jdietz@bepc.com](mailto:jdietz@bepc.com)

## News Release

[www.basinelectric.com](http://www.basinelectric.com)

**JULY 22, 2020**

**New North Dakota wind project will soon provide affordable, renewable power to Basin Electric customers**

### FOR IMMEDIATE RELEASE

Bismarck, N.D. – A new wind project in North Dakota will provide another 200 megawatts (MW) of affordable, renewable power to Basin Electric customers.

Basin Electric Power Cooperative and a subsidiary of NextEra Energy Resources, LLC, have executed a 30-year power purchase agreement (PPA) for the entire output of the Northern Divide Wind Energy Project in Burke County, North Dakota. Northern Divide will add 200 MW of wind energy to Basin Electric's portfolio, which, includes approximately 1,360 MW of wind, more than 20% of its current total generation capability. Additionally, 200 MW of wind was added when a South Dakota wind project came online in April 2020.

"Renewable technology has advanced dramatically in recent years, which means even more affordable power for Basin Electric's customers," said Paul Sukut, CEO and general manager of Basin Electric. "Basin Electric is excited to purchase the output from the Northern Divide Wind Energy Project to help serve our growing energy needs."

The Northern Divide Wind Energy Project was approved by the North Dakota Public Service Commission in June and construction began in July. According to NextEra Energy Resources, the project will eliminate nearly 600,000 metric tons of carbon dioxide per year and produce enough electricity to power nearly 65,000 typical North Dakota households per year.

Unlike most electric utilities across the country, Basin Electric was experiencing significant growth across its service territory prior to COVID-19, and Basin Electric is meeting that growth largely with renewable resources. In the last decade alone, Basin Electric has seen 50% load growth increase, 80% of which was met with renewables, natural gas, and market purchases. After the economy recovers from the COVID-19 impacts, Basin Electric staff believes that its membership will continue to have significant growth.

"Our commitment to wind dates back nearly 20 years with the construction and commissioning of our first wind project. Since then, we have constructed a number of wind projects of our own, including the largest wind project in the nation that is solely owned and operated by a cooperative, and have secured power purchase agreements for a large amount of power. In fact, we have more than doubled our wind capability in just the past five years and expect it to continue growing in the coming years," Sukut said.

"We are very pleased to work with Basin Electric to produce cost-effective, home-grown, renewable energy for its customers," said John Di Donato, vice president of development and origination for NextEra Energy Resources. "The Northern Divide wind project will also create significant economic benefits to Burke County and the entire region, including good jobs, landowner payments, and millions of dollars in additional tax revenue for the community."

"Burke-Divide Electric Cooperative is proud to have the Northern Divide wind project become a part of the cooperative," said Jerry King, Burke-Divide Electric Cooperative general manager. "It will bring additional renewable energy to Basin Electric's already diverse energy portfolio, as well as employ many local folks in our service territory, which will help the communities they choose to live in – from housing, to schooling, to overall economic development."

Basin Electric Class A member Upper Missouri Power Cooperative, headquartered in Sidney, Montana, provides wholesale power to Burke-Divide Electric and 10 other distribution cooperatives in western North Dakota and eastern Montana. "It is encouraging to witness the development of cost-competitive energy like the Northern Divide Wind Energy Project, which will be part of the energy mix we purchase from Basin Electric for our member systems, said Claire Vigasaa, Upper Missouri Power's general manager. "The energy needs in our region are growing and this project will help us serve both our members, and our communities as a whole."

The Northern Divide project will bring significant economic benefits to Burke County. According to NextEra Energy Resources, the project is expected to contribute \$30 million in property taxes to the local community over its first 30 years of operations, as well as \$30 million in landowner payments. The company estimates the project will also create approximately 200-300 construction jobs and five to seven full-time jobs once it is completed.

Northern Divide is anticipated to begin operation by the end of 2020.

### **About Basin Electric Power Cooperative**

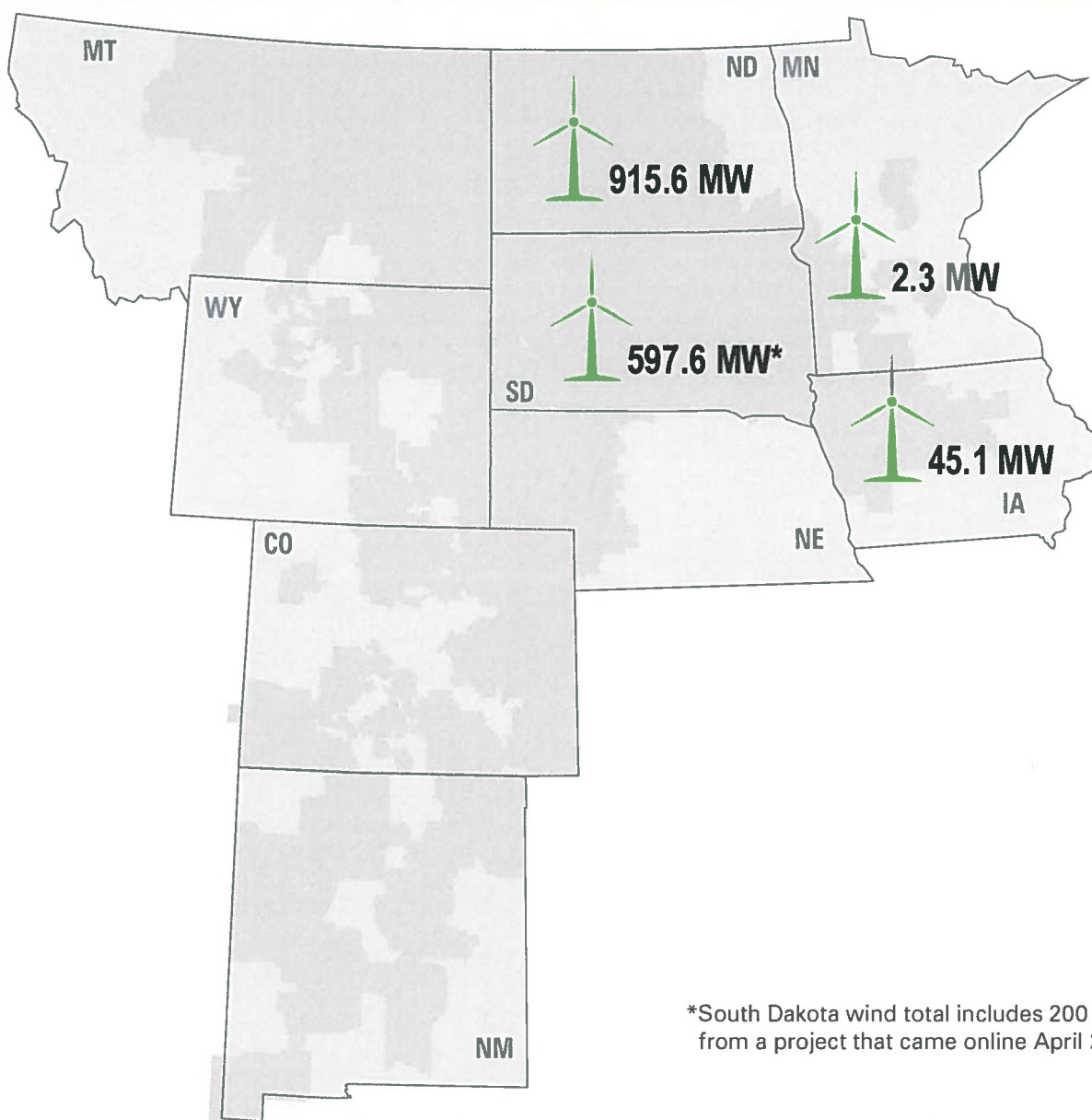
Basin Electric is a consumer-owned, regional cooperative headquartered in Bismarck, North Dakota. It generates and transmits electricity to 140 member rural electric systems in nine states: Colorado, Iowa, Minnesota, Montana, Nebraska, New Mexico, North Dakota, South Dakota, and Wyoming. These member systems distribute electricity to about 3 million consumers. Learn more at [www.basinelectric.com](http://www.basinelectric.com).

### **Sidebar Project at a glance:**

According to NextEra Energy Resources, the Northern Divide Wind Energy Project is estimated to:

- Eliminate nearly 600,000 metric tons of carbon dioxide per year
- Produce enough electricity to power nearly 65,000 typical North Dakota households per year
- Contribute \$30 million in property taxes to the local community over its first 30 years of operations
- Contribute \$30 million in landowner payments
- Create approximately 200-300 jobs during construction
- Create five to seven full-time jobs upon completion

# Basin Electric Wind Resources



These numbers include resources owned by Basin Electric and purchase power agreements with other power companies.

## July 28, 2020 board meeting Office Manager's Report:

### 1. Accounts Receivable balances as of:

- a) Current (June 30<sup>th</sup> statement) \$869,061.59
- b) 1-30 Days (May 31<sup>st</sup> statement) \$16,019.20
- c) 31-60 Days (April 30<sup>th</sup> statement) \$4,870.05
- d) 61-90 Days (March 31<sup>st</sup> statement) \$896.24
- e) Older than 91 days - \$11,654.03
- f) 54 disconnect notices were issued for July resulting in 1 disconnect in SD on July 14 (reconnected same day with payment arrangements. No reconnection fee charged.) One account in SD remain disconnected from May with no contact from them.

### 2. New Members Connected:

- a) Tri-County Co-op Oil Assoc. Inc.
- b) Stephen or Kelli Powers
- c) Gina Frye
- d) Lisa Kuipers
- e) Pembina Cochin LLC
- f) Becky Temple
- g) Steve Kunkel

### 3. Office response to COVID-19.

- a) We opened our lobby on June 22. Visitors are instructed to not enter the building if they have the symptoms of COVID-19 posted on the door. Upon entering, hand sanitizer and disposable masks are available at the front counter. Sneeze guards are also in place at the counter. Surfaces frequently touched by visitors are disinfected regularly during the day.
- b) With MN Governor Walz's executive order effective July 25, face masks are required to be worn in public when 6 ft. social distancing is not an option. We have updated our COVID-19 Preparedness Plan to reflect this change.

### 4. Past due accounts affected by COVID-19

- a) Tribal members in SD are able to get additional assistance with paying their utility bills. Each qualifying member may be eligible to receive \$500-\$1000 from COVID-19 funds the tribe recently received. These payments are starting to come in.

### 5. MN unclaimed capital credits totaled \$4,633.72 this year. They were donated to area MN 6 volunteer ambulance services. A letter explaining the donation will be sent along with the checks.

CONFIDENTIAL

6. The Wheaton Dumont Elevator will make its final payment for the Graceville Elevator site construction charges on the 07/31/2020 billing statement. The construction charges were included as an addition to their \$76.00 monthly facility charge (\$1803.00 per month). Beginning with the 08/31/2020 billing statement their monthly facility charge will be \$76.00 per month.

7. The new billing statement design was scheduled to be introduced with our August 31 statements. It is postponed until the October 31 statements now. Dairyland is moving into a new building that isn't large enough to house the new printing equipment needed for the new statements. Due to COVID their building project start date was delayed, but has no delays since they began construction.



<b>USDA - RUS</b>  <b>FINANCIAL AND STATISTICAL REPORT</b>			BORROWER DESIGNATION <b>MN 84 Traverse</b>		
INSTRUCTIONS - See RUS Bulletin 1717B-2			PERIOD ENDED <b>June 2020</b>		
<b>PART B. DATA ON TRANSMISSION AND DISTRIBUTION PLANT</b>					
ITEM	YEAR-TO-DATE		ITEM	YEAR-TO-DATE	
	LAST YEAR (a)	THIS YEAR (b)		LAST YEAR (a)	THIS YEAR (b)
1. New Services Connected	10	23	5. Miles Transmission		
2. Services Retired	4	11	6. Miles Distribution- Overhead	1,170	1,167
3. Total Services in Place	3,185	3,229	7. Miles Distribution- Underground	532	561
4. Idle Services (Exclude Seasonal)	0	0	8. Total Miles Energized (5 + 6 + 7)	1,702	1,728
<b>PART E. KWH AND KW STATISTICS</b>					
ITEM	YEAR-TO-DATE		ITEM	YEAR-TO-DATE	
	THIS MONTH (a)	YTD (b)		THIS MONTH (a)	YTD (b)
1. Net kWh Generated			6. Office Use	6,481	177,846
2. kWh Purchased	9,202,164	59,167,111	7. Total Unaccounted For (4 Less 5 & 6)	448,062	2,607,229
3. Interchange kWh - Net			8. Percent System Loss (7/4) x 100	5	4
4. Total kWh (1 thru 3)	9,202,164	59,167,111	9. Maximum Demand (kW)	15,075	
5. Total kWh Sold	8,747,621	56,382,036	10. Mo When Max Demand Occurred	February	18995

## PART D. CONSUMER SALES AND REVENUE DATA

Class Of Service	THIS MONTH				YEAR-TO-DATE		
	# Rec'g Service a	kWh Sold b	Amount c	# Min Bills d	Avg # Rec'g Serv e	kWh Sold Cumulative f	Amount Cumulative g
1. Residential Sales	2,564	3,427,856	455,501		2,555	29,015,153	3,233,942
2. Seasonal Sales	402	205,455	38,625		399	1,048,341	197,785
3. Irrigation Sales	12	46,023	5,650		12	46,637	11,829
4. Comm - 50 kVA or less	8	26,745	3,616		3	36,737	5,652
5. Comm - over 50 kVA	104	859,217	85,095		110	6,662,818	626,618
6. Kinder Morgan	1	483,020	34,972		1	1,971,740	159,562
7. Veblen Dairy	1	1,625,855	119,102		1	8,618,666	636,560
8. WDCE - Graceville Loc	1	87,000	10,046		1	970,000	84,777
9. Dollymount Dairy	5	1,816,450	143,514		3	7,015,321	507,044
10. Campbell Dairy	1	170,000	16,184		1	996,623	95,822
11. Total Sale of Electric	3,099	8,747,621	912,305		3,086	56,382,036	5,559,590
12. Other Elec Revenue			1,103				-20,575
13. Total (11 + 12)			913,407				5,539,015

1.  $12767 + 2564 = 15331 / 6 = 2555$
2.  $1992 + 402 = 2394 / 6 = 399$
3.  $60 + 12 = 72 / 6 = 12$
4.  $10 + 8 = 18 / 6 = 3$
5.  $560 + 104 = 664 / 6 = 110$
9.  $15 + 5 = 20 / 6 = 3$

**Traverse Electric Cooperative Inc**  
**Financial and Operating Report Electric Distribution**  
**Statement of Operations**  
For the six months ending 6/30/2020

	2019 <u>YTD Actual</u>	2020 <u>YTD Actual</u>	2020 <u>YTD Budget</u>	2020 <u>June</u>
1. Operating Revenue and Patronage Capital	5,453,905.57	5,539,014.74	5,483,910.00	913,407.47
2. Power Production Expense	0.00	0.00	0.00	0.00
3. Cost of Purchased Power	3,367,885.09	3,375,193.25	3,478,588.00	577,865.64
4. Transmission Expense	0.00	0.00	0.00	0.00
5. Regional Market Expense	0.00	0.00	0.00	0.00
6. Distribution Expense - Operation	299,319.74	222,413.40	296,754.00	36,396.98
7. Distribution Expense - Maintenance	279,477.19	327,682.89	343,070.00	40,205.57
8. Customer Accounts Expense	90,791.55	97,826.05	91,004.00	16,876.01
9. Customer Service and Informational Expense	34,460.51	41,828.05	50,212.00	6,515.01
10. Sales Expense	4,595.00	5,694.60	4,252.00	793.60
11. Administrative and General Expense	506,297.36	485,496.07	526,298.00	65,340.07
12. Total Operation & Main. Expense (2 thru 11)	4,582,826.44	4,556,134.31	4,790,178.00	743,992.88
13. Depreciation and Amortization Expense	481,373.41	376,567.16	402,675.00	63,381.57
14. Tax Expense - Property & Gross Receipts	0.00	0.00	0.00	0.00
15. Tax Expense - Other	349.83	534.08	0.00	0.00
16. Interest on Long-Term Debt	318,368.00	232,683.60	231,307.13	37,692.36
17. Interest Charged to Construction - Credit	0.00	0.00	0.00	0.00
18. Interest Expense - Other	255.28	397.69	240.00	51.83
19. Other Deductions	0.00	0.00	0.00	0.00
20. Total Cost of Electric Service (12 thru 19)	5,383,172.96	5,166,316.84	5,424,400.13	845,118.64
21. Patronage Capital & Operating Margins (1 - 20)	70,732.61	372,697.90	59,509.87	68,288.83
22. Non Operating Margins - Interest	126,479.68	35,528.49	45,000.00	2,382.51
23. Allowance for Funds Used During Construction	0.00	0.00	0.00	0.00
24. Income (Loss) from Equity Investments	0.00	0.00	0.00	0.00
25. Non Operating Margins - Other	(19,595.82)	(7,881.22)	9,150.00	1,619.11
26. Generation and Transmission Capital Credits	0.00	0.00	0.00	0.00
27. Other Capital Credits and Patronage Dividends	11,398.23	10,272.51	12,000.00	0.00
28. Extraordinary Items	0.00	0.00	0.00	0.00
29. Patronage Capital or Margins (21 thru 28)	189,014.70	410,617.68	125,659.87	72,290.45

## Income Statement Analysis Ratios

For the six months ending 6/30/2020

$$\begin{aligned}\text{Times Interest Ratio} &= 3 \text{ to } 1 \\ &= \text{Line 29} + \text{Line 16} / \text{Line 16} \\ &= \frac{410,617.68 + 232,683.60}{232,683.60}\end{aligned}$$

$$\begin{aligned}\text{Modified Times Interest Earned Ratio} &= 3 \text{ to } 1 \\ &= \text{Line 29} - \text{Line 26} - \text{Line 27} - \text{Line 28} + \text{Line 16} / \text{Line 16} \\ &= \frac{410,617.68 - 0.00 - 10,272.51 - 0.00 + 232,683.60}{232,683.60}\end{aligned}$$

$$\begin{aligned}\text{Operating Times Interest Earned Ratio} &= 3 \text{ to } 1 \\ &= \text{Line 21} + \text{Line 16} / \text{Line 16} \\ &= \frac{372,697.90 + 232,683.60}{232,683.60}\end{aligned}$$

**Traverse Electric Cooperative Inc**  
**Financial and Operating Report Electric Distribution**  
**Balance Sheet**

For the period ending 06/30/2020

	-----2020-----		-----2019-----	
	<u>June</u> <u>Activity</u>	<u>June</u> <u>Balance</u>	<u>June</u> <u>Activity</u>	<u>June</u> <u>Balance</u>
<u><i>Assets and Other Debits</i></u>				
1. Total Utility Plant in Service	(56,210.94)	25,960,094.97	48,300.83	25,386,579.42
2. Construction Work in Progress	28,102.33	260,308.08	175,136.42	1,450,801.29
3. Total Utility Plant (1+2)	(28,108.61)	26,220,403.05	223,437.25	26,837,380.71
4. Accum. Provision for Depreciation and Amort	16,598.76	(10,523,046.16)	(75,311.37)	(11,181,803.82)
5. Net Utility Plant (3-4)	(11,509.85)	15,697,356.89	148,125.88	15,655,576.89
6. Non-Utility Property - Net	0.00	0.00	0.00	0.00
7. Investment in Subsidiary Companies	0.00	0.00	0.00	0.00
8. Invest in Assoc. Org.-Patronage Capital	(2,110.00)	5,774,646.13	0.00	5,579,452.32
9. Invest in Assoc. Org.-Other-General Funds	0.00	26,134.57	0.00	23,276.57
10. Invest in Assoc. Org.-Other-Nongeneral Funds	0.00	284,154.08	0.00	283,435.36
11. Investments in Economic Development Projects	0.00	0.00	0.00	0.00
12. Other Investments	(140.17)	58,515.21	(1,612.23)	74,053.85
13. Special Funds	0.00	0.00	0.00	0.00
14. Total Other Property & Investments(6 thru 13)	(2,250.17)	6,143,449.99	(1,612.23)	5,960,218.10
15. Cash-General Funds	267,715.41	526,597.11	(35,744.35)	561,915.29
16. Cash-Construction Funds-Trustee	0.00	1.00	0.00	1.00
17. Special Deposits	0.00	0.00	0.00	1,000.00
18. Temporary Investments	(295,291.15)	3,346,003.05	(178,740.38)	3,565,589.69
19. Notes Receivable - Net	(2,634.50)	216,029.00	0.00	0.00
20. Accounts Receivable - Sales of Energy (Net)	70,257.96	935,526.53	(57,009.68)	862,499.07
21. Accounts Receivable - Other (Net)	(69,835.15)	42,481.96	5,385.64	(130,771.62)
22. Renewable Energy Credits	0.00	0.00	0.00	0.00
23. Materials & Supplies - Electric and Other	(17,575.26)	398,787.86	17,060.90	632,989.31
24. Prepayments	(9,070.20)	21,377.73	(8,921.69)	17,434.71
25. Other Current & Accrued Assets	2,053.61	4,988.24	6,456.41	13,818.09
26. Total Current & Accrued Assets (15 thru 25)	(54,379.28)	5,491,792.48	(251,513.15)	5,524,475.54
27. Regulatory Assets	0.00	0.00	0.00	0.00
28. Other Deferred Debits	(5,397.89)	156,610.42	(5,397.89)	220,323.60
29. Total Assets & Other Debits (5+14+26 thru 28)	<u>(73,537.19)</u>	<u>27,489,209.78</u>	<u>(110,397.39)</u>	<u>27,360,594.13</u>
<u><i>Liabilities and Other Credits</i></u>				
30. Memberships	0.00	0.00	0.00	0.00
31. Patronage Capital	(2,693.60)	13,087,309.48	(3,999.66)	12,404,013.82
32. Operating Margins - Prior Years	0.00	0.00	0.00	0.00
33. Operating Margins - Current Year	68,288.83	372,697.90	(52,204.35)	70,732.61
34. Non Operating Margins	4,001.62	37,921.79	19,384.77	118,284.10
35. Other Margins and Equities	1,026.97	486,206.76	1,786.59	445,925.39
36. Total Margins & Equities (30 thru 35)	70,623.82	13,984,135.93	(35,032.65)	13,038,955.92
37. Long-Term Debt RUS (Net)	(15,511.41)	4,398,755.34	(16,158.40)	5,111,622.94
38. Long-Term Debt - FFB - RUS Guaranteed	(49,388.71)	7,644,269.42	0.00	9,880,692.31
39. Long Term Debt - Other - RUS Guaranteed	(22,383.07)	0.00	(21,360.77)	262,933.93
40. Long-Term Debt - Other (Net)	0.00	589,693.43	0.00	627,231.96
41. Long-Term Debt - RUS - Econ. Devel. (Net)	0.00	0.00	0.00	0.00
42. Payments - Unapplied	0.00	0.00	23,501.79	(2,570,658.63)
43. Total Long-Term Debt (37 thru 41-42)	(87,283.19)	12,632,718.19	(14,017.38)	13,311,822.51
44. Obligations Under Capital Leases	0.00	0.00	0.00	0.00
45. Accumulated Operating Provisions	0.00	0.00	0.00	0.00
46. Total Other Noncurrent Liabilities (44 + 45)	0.00	0.00	0.00	0.00
47. Notes Payable	0.00	0.00	0.00	0.00
48. Accounts Payable	38,077.96	666,068.67	(43,831.50)	710,719.04
49. Consumer Deposits	(150.00)	13,200.00	400.00	12,750.00
50. Current Maturities Long Term Debt	0.00	0.00	0.00	0.00
51. Current Maturities - Econ Development	0.00	0.00	0.00	0.00
52. Current Maturities - Capital Leases	0.00	0.00	0.00	0.00
53. Other Current & Accrued Liabilities	(94,805.78)	166,696.93	(17,915.86)	258,816.22
54. Total Current & Accrued Liab (47 thru 53)	(56,877.82)	845,965.60	(61,347.36)	982,285.26
55. Regulatory Liabilities	0.00	0.00	0.00	0.00
56. Other Deferred Credits	0.00	26,390.06	0.00	27,530.44
57. Total Liab & Other Credits(36+43+46+54 thru 56)	<u>(73,537.19)</u>	<u>27,489,209.78</u>	<u>(110,397.39)</u>	<u>27,360,594.13</u>

**Balance Sheet Analysis Ratios**

For the period ending 06/30/2020

**Equity as a Percent of Assets = 50.87 %****= Line 36 / Line 29**

$$= \frac{13,984,135.93}{27,489,209.78}$$

**General Funds as a Percent of Total Utility Plant = 14.9926 %****= Line 12 + Line 13 + Line 15 + Line 16 + Line 18 / Line 3**

$$= \frac{58,515.21 + 0.00 + 526,597.11 + 1.00 + 3,346,003.05}{26,220,403.05}$$

**Modified Equity as a Percent of Assets = 29.8644 %****= Line 36 - Line 8 / Line 29**

$$= \frac{13,984,135.93 - 5,774,646.13}{27,489,209.78}$$

**Current Assets to Current Liabilities Ratio = 6.4917 to 1****= Line 26 / Line 54**

$$= \frac{5,491,792.48}{845,965.60}$$

**Total Long-Term Debts as a Percentage of Total Utility Plant = 48.1790 %****= Line 43 / Line 3**

$$= \frac{12,632,718.19}{26,220,403.05}$$

June Comparison 2020				
	19-Jun	YTD 19	YTD 20	20-Jun
Revenue	\$ 804,602.53	\$ 5,453,905.57	\$ 5,539,014.74	\$ 913,407.47
Cost of Power	\$ 510,050.35	\$ 3,367,885.09	\$ 3,375,193.25	\$ 577,865.64
Distribution Exp - Oper.	\$ 44,106.37	\$ 299,319.74	\$ 222,413.40	\$ 36,396.98
Distribution Exp. - Maint.	\$ 68,313.42	\$ 279,477.19	\$ 327,682.89	\$ 40,205.57
Interest Paid	\$ 52,694.10	\$ 318,623.28	\$ 233,081.29	\$ 37,744.19
Total Cost of Service	\$ 856,806.88	\$ 5,383,172.96	\$ 5,166,316.84	\$ 845,118.64
Margin Operation	\$ (52,204.35)	\$ 70,732.61	\$ 372,697.90	\$ 68,288.83
Other Income	\$ 19,384.77	\$ 118,282.09	\$ 37,919.78	\$ 4,001.62
Total Margins	\$ (32,819.58)	\$ 189,014.70	\$ 410,617.68	\$ 72,290.45
Total kWh Sold	7,689,212	56,242,336	56,382,036	8,747,621
Line Loss	4%	4%	4%	5%

East River COVID Credit Total	\$ 12,809.25
Minnesota	\$ 8,170.47
South Dakota	\$ 4,638.78

**Traverse Electric Cooperative, Inc.**  
**Quarterly Budget Analysis - 2020**

For the Quarter Ending: 06/30/20

	Quarter 2: April, May & June				Year-to-Date			
	Budget	Actual	Variance	% of Budget	Budget	Actual	Variance	% of Budget
Revenue	\$ 2,575,705.00	\$ 2,630,970.69	\$ 55,265.69	102%	\$ 5,483,910.00	\$ 5,539,014.74	\$ 55,104.74	101%
Purchased Power	\$ 1,649,453.00	\$ 1,598,900.42	\$ (50,552.58)	97%	\$ 3,478,588.00	\$ 3,375,193.25	\$ (103,394.75)	97%
Gross Operating Margin	\$ 926,252.00	\$ 1,032,070.27	\$ 105,818.27	111%	\$ 2,005,322.00	\$ 2,163,821.49	\$ 158,499.49	108%
Operations Expense	\$ 143,431.00	\$ 94,694.68	\$ (48,736.32)	66%	\$ 296,754.00	\$ 222,413.40	\$ (74,340.60)	75%
Maintenance Expense	\$ 139,855.00	\$ 172,297.61	\$ 32,442.61	123%	\$ 343,070.00	\$ 327,682.89	\$ (15,387.11)	96%
Customer Accounts Expense	\$ 45,498.00	\$ 52,352.65	\$ 6,854.65	115%	\$ 91,004.00	\$ 97,826.05	\$ 6,822.05	107%
Customer Service & Information Expense	\$ 24,999.00	\$ 25,658.67	\$ 659.67	103%	\$ 50,212.00	\$ 41,828.05	\$ (8,383.95)	83%
Sales Expense	\$ 2,126.00	\$ 2,858.60	\$ 732.60	134%	\$ 4,252.00	\$ 5,694.60	\$ 1,442.60	134%
Administrative & General Expense	\$ 257,854.00	\$ 228,087.55	\$ (29,766.45)	88%	\$ 526,298.00	\$ 485,496.07	\$ (40,801.93)	92%
Total Operating Expenses	\$ 2,263,216.00	\$ 2,174,850.18	\$ (88,365.82)	96%	\$ 4,790,178.00	\$ 4,566,134.31	\$ (234,043.69)	95%
Depreciation & Amortization Expense	\$ 201,330.00	\$ 189,385.07	\$ (11,944.93)	94%	\$ 402,675.00	\$ 376,567.16	\$ (26,107.84)	94%
Interest on Long-Term Debt	\$ 115,654.06	\$ 115,621.48	\$ (32.58)	100%	\$ 231,307.13	\$ 232,683.60	\$ 1,376.47	101%
Interest Expense Other	\$ 180.00	\$ 185.98	\$ 5.98		\$ 250.00	\$ 397.69	\$ 147.69	159%
Total Fixed Expenses	\$ 317,164.06	\$ 305,192.53	\$ (11,971.53)	96%	\$ 634,232.13	\$ 609,648.45	\$ (24,583.68)	96%
Total Cost Of Service	\$ 2,660,105.06	\$ 2,480,436.79	\$ (179,668.27)	93%	\$ 5,424,400.13	\$ 5,166,316.84	\$ (258,083.29)	95%
Operating Margins	\$ (84,400.06)	\$ 150,533.90	\$ 234,933.96	-178%	\$ 59,509.87	\$ 372,697.90	\$ 313,188.03	626%
Non-Operating Margins - Interest	\$ 22,500.00	\$ 12,284.57	\$ (10,215.43)	55%	\$ 45,000.00	\$ 35,528.49	\$ (9,471.51)	79%
Non-Operating Margins - Other	\$ 5,640.00	\$ 4,666.93	\$ (973.07)	83%	\$ 9,150.00	\$ (7,881.22)	\$ (17,031.22)	-86%
Generating & Transmission CC	\$ -	\$ -	\$ -		\$ -	\$ -	\$ -	
Other CC - CFC - Resco	\$ -	\$ -	\$ -	0%	\$ 12,000.00	\$ 10,272.51	\$ (1,727.49)	86%
Total Non-Operating Margins	\$ 28,140.00	\$ 16,951.50	\$ (11,188.50)	60%	\$ 66,150.00	\$ 37,919.78	\$ (28,230.22)	57%
Total Patronage Capital or Margins	\$ (56,260.06)	\$ 167,485.40	\$ 223,745.46	-298%	\$ 125,659.87	\$ 410,617.68	\$ 284,957.81	327%



**Traverse Electric Cooperative, Inc.**  
**Quarterly Capital Budget Analysis - 2020**

For the Quarter Ending: 06/30/20

	This Quarter (April, May, June)							Year-to-Date			
	Quantity	Quantity Purchased	Unit Amount	Budgeted	Actual	Variance	% of Budget	Budgeted	Actual	Variance	% of Budget
<b>Operations &amp; Maintenance</b>											
Combination Bucket/Digger	1	0	\$ 275,000.00	\$ 275,000.00	\$ -	\$ (275,000.00)	0%	\$ 275,000.00	\$ -	\$ (275,000.00)	0%
Resurface Tar Driveway	1	0	\$ 35,000.00	\$ 35,000.00	\$ -	\$ (35,000.00)	0%	\$ 35,000.00	\$ -	\$ (35,000.00)	0%
Vehicle	1	0	\$ 50,000.00	\$ 50,000.00	\$ -	\$ (50,000.00)	0%	\$ 50,000.00	\$ -	\$ (50,000.00)	0%
<b>Information Technology</b>											
MDM - PCS	1	0	\$ 32,700.00	\$ 32,700.00	\$ -	\$ (32,700.00)	0%	\$ 32,700.00	\$ -	\$ (32,700.00)	0%
OMS - Star Energy	1	1	\$ 6,000.00	\$ 6,000.00	\$ 1,500.00	\$ (4,500.00)	25%	\$ 6,000.00	\$ 3,000.00	\$ (3,000.00)	50%
email Domain	1	0	\$ 1,584.00	\$ 1,584.00	\$ -	\$ (1,584.00)	0%	\$ 1,584.00	\$ -	\$ (1,584.00)	0%
Printer	1	0	\$ 500.00	\$ 500.00	\$ -	\$ (500.00)	0%	\$ 500.00	\$ -	\$ (500.00)	0%
Desktop	1	1	\$ 1,342.83	\$ 1,700.00	\$ 1,342.83	\$ (357.17)	79%	\$ 1,700.00	\$ 1,342.83	\$ (357.17)	79%
Laptop	2	2	\$ 2,500.00	\$ 5,000.00	\$ 2,149.62	\$ (2,850.38)	43%	\$ 5,000.00	\$ 4,028.17	\$ (971.83)	81%
Computer Monitors 24"	3	2	\$ 187.04	\$ 750.00	\$ 374.07	\$ (375.93)	50%	\$ 750.00	\$ -	\$ (750.00)	0%
Monitor 70"	1	1	\$ 536.86	\$ 1,200.00	\$ 536.86	\$ (663.14)	45%	\$ 1,200.00	\$ 536.86	\$ (663.14)	45%
White Noise Machine	3	1	\$ 200.00	\$ 600.00	\$ 48.04	\$ (551.96)	8%	\$ 600.00	\$ 48.04	\$ (551.96)	8%
Portable Projector (w/speaker & screen)	1	1	\$ 500.00	\$ 500.00	\$ 510.82	\$ 10.82	102%	\$ 500.00	\$ 510.82	\$ 10.82	102%
<b>Administrative &amp; General</b>											
Boardroom Chairs	13	13	\$ 336.66	\$ 5,200.00	\$ -	\$ -	0%	\$ 5,200.00	\$ 4,376.53	\$ (823.47)	84%
GM Office	1	1	\$ 5,000.00	\$ 5,000.00	\$ 9,042.34	\$ 4,042.34	181%	\$ 5,000.00	\$ 10,675.67	\$ 5,675.67	214%
Furniture	1	1	\$ 5,000.00	\$ 5,000.00	\$ 3,460.60	\$ (1,539.40)	69%	\$ 5,000.00	\$ 3,460.60	\$ (1,539.40)	69%
Doors	5	0	\$ 250.00	\$ 1,250.00	\$ -	\$ (1,250.00)	0%	\$ 250.00	\$ -	\$ (250.00)	0%
New Statement Design	1	1	\$ 6,300.00	\$ 6,300.00	\$ 274.75	\$ (6,025.25)	4%	\$ 6,300.00	\$ 2,551.25	\$ (3,748.75)	40%
Office Maintenance	1	1	\$ 1,000.00	\$ 1,000.00	\$ 500.00	\$ (500.00)	50%	\$ 1,000.00	\$ 500.00	\$ (500.00)	50%
<b>Safety</b>											
AED	1	0	\$ 1,800.00	\$ 1,800.00	\$ -	\$ (1,800.00)	0%	\$ 1,800.00	\$ -	\$ (1,800.00)	0%
Gas Cylinder Cabinet	1	1	\$ 800.00	\$ 800.00	\$ -	\$ -	0%	\$ 800.00	\$ 504.74	\$ (295.26)	63%

**Traverse Electric Cooperative, Inc.**  
**Quarterly kWh Sales Budget Analysis - 2020**

**For the Quarter Ending: 06/30/20**

		Quarter 2: April, May & June				Year-to-Date			
Account	kWh Sales	Budget	Actual	Variance	% of Budget	Budget	Actual	Variance	% of Budget
440.10	Residential Sales - Rural	10,758,427	17,734,048	6,975,621	165%	30,281,330	29,015,153	(1,266,177)	96%
440.20	Residential Sales - Seasonal	405,428	568,397	162,969	140%	1,087,488	1,048,341	(39,147)	96%
441.00	Irrigation Sales	355	186	(169)	52%	621	46,637	46,016	7510%
442.10	Comm & Ind Small Under 50 KVA	899,228	4,291	(894,937)	0%	903,492	36,737	(866,755)	4%
442.20	Comm & Ind Large Over 50 KVA	1,853,055	3,303,980	1,450,925	178%	4,315,154	6,662,818	2,347,664	154%
442.30	Kinder Morgan	1,819,250	644,577	(1,174,673)	35%	3,225,220	1,971,740	(1,253,480)	61%
442.30	WDCE - Graceville Loc.	508,529	415,000	(93,529)	82%	1,020,346	970,000	(50,346)	95%
442.30	Dollymount Dairy - North	1,154,940	1,128,000	(26,940)	98%	2,008,465	1,990,275	(18,190)	99%
442.30	Dollymount Dairy - South	575,832	567,500	(8,332)	99%	1,131,562	1,093,008	(38,554)	97%
442.30	Campbell Dairy - North	1,811,818	1,767,750	(44,068)	98%	3,058,300	3,052,138	(6,162)	100%
442.30	Campbell Dairy - South	455,039	491,500	36,461	108%	997,677	996,623	(1,054)	100%
442.30	North Ottawa Dairy - North	485,584	855,000	369,416	176%	485,584	708,000	222,416	146%
442.30	North Ottawa Dairy - South	195,592	517,200	321,608	264%	195,592	171,900	(23,692)	88%
442.40	Veblen / Marshall Dairy	4,698,626	4,768,559	69,933	101%	8,210,681	8,618,666	407,985	105%
	<b>Total kWh Sales</b>	<b>25,621,703</b>	<b>32,765,988</b>	<b>7,144,285</b>	<b>128%</b>	<b>56,921,512</b>	<b>56,382,036</b>	<b>(539,476)</b>	<b>99%</b>

## Operation Manager's Report

*Dale Schwagel*

July 22, 2020

### A. As of July 22, 2020, crews have been busy with the following:

- Pole changeouts
- several new services, that did not require line extension
- Service upgrades
- Outages. We have been dealing with these on a regular basis lately.
- Terminating new underground and retire overhead for the ditch project along HWY 75. We had Integrity Contracting do the install of the Underground. Hoping to get this project wrapped up by the end of the week, barring outages.

### B. Miscellaneous:

- **STORMS**

- I sent a crew of 4 with 2 trucks and pickup, to Lake Region (Pelican Rapids) on the 9<sup>th</sup> to help with storm restoration, with plans to send them back on the 10<sup>th</sup>. We were hit with a storm at around 11:30 pm on the 9<sup>th</sup> and had our own issues to take care of. The main issue with this storm, was the 3 phase poles that tipped over, due to ditching too close. This caused an extensive outage for the Campbell Dairy. PHOTOS ATTACHED
- The storm on the 17<sup>th</sup>, hit around 11:00 pm, we had multiple poles down in SD, and a lot of trees through lines throughout the system. The crews put in some long hours, but were able to get everyone on by Saturday evening. We had to bring in a contractor with a bomb unit, to replace and straighten some poles in a slough in SD on Monday morning, they ended up swamping this unit as well and had to be winched out. PHOTO ATTACHED

- **CARRS TREE SERVICE:**

- Has 3 crews working on the MN side of Lake Traverse, and will be in the area for a while yet.

- **UNDERGROUND CABINET INSPECTIONS**

- STAR ENERGY started inspections of pad mounted transformers, and junction boxes on the 1<sup>st</sup> of July and will inspect approximately 300 units.

- **PYXIS OUTAGE MANAGEMENT:**

- Launched the new mobile OMS to the IPADS, crews can now see meters that are off, and when they come back on. This is a great tool when dealing with the wide spread outages that we just experienced, the crews are also able to see where the other trucks are at.

CONFIDENTIAL

**C. SAFETY:**

- **MREA:**

- Conducted a safety meeting on the 7<sup>th</sup>, with the main topic being, Distributed Generation Safety.
- Conducted 2 crew observations after the meeting.
- Safety Playbooks
- Safety pallet

- **STAR:**

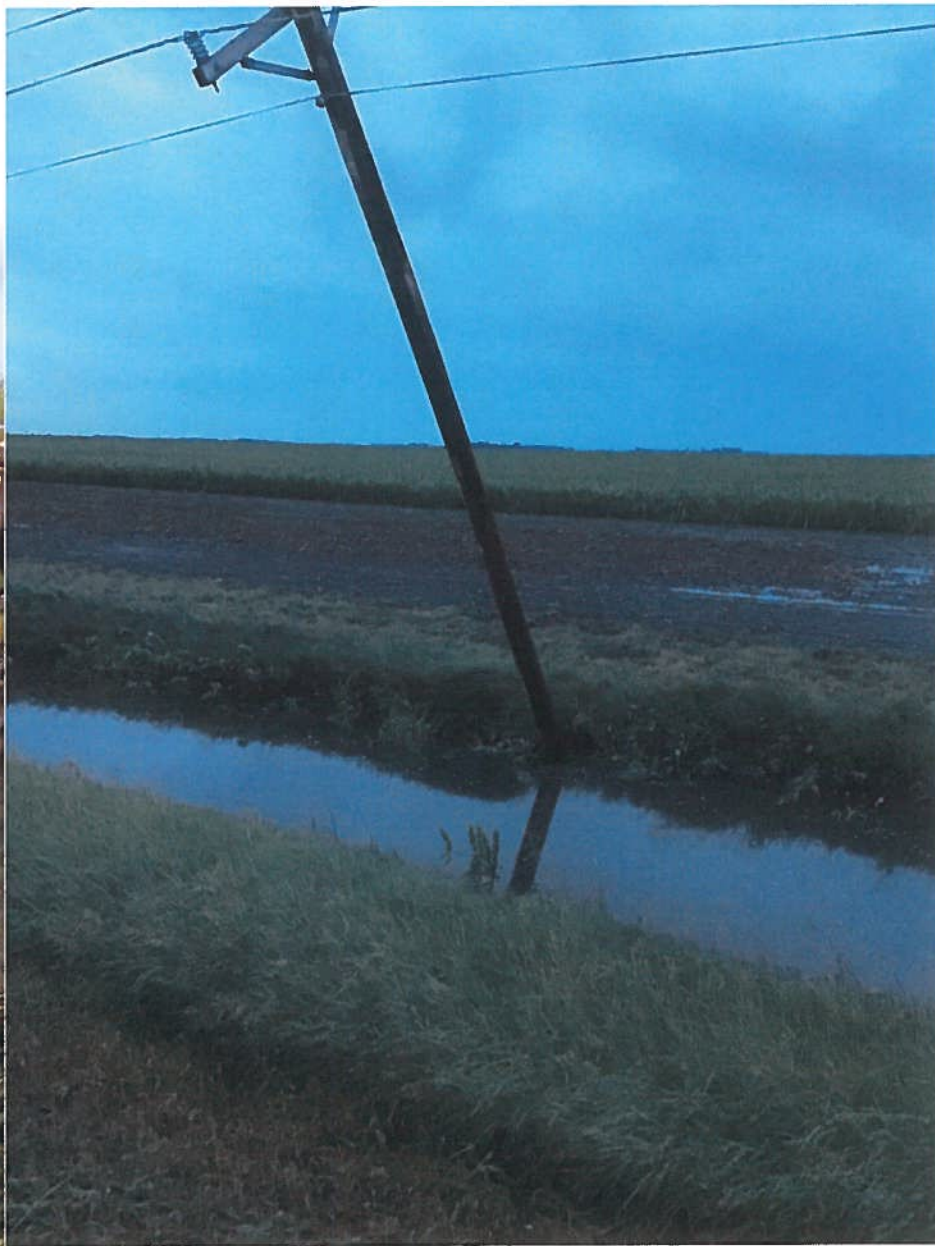
- Be Safe topics
- Safety News Letter

- **FEDERATED:**

- Litigation Report
- S.A.F.E. talk

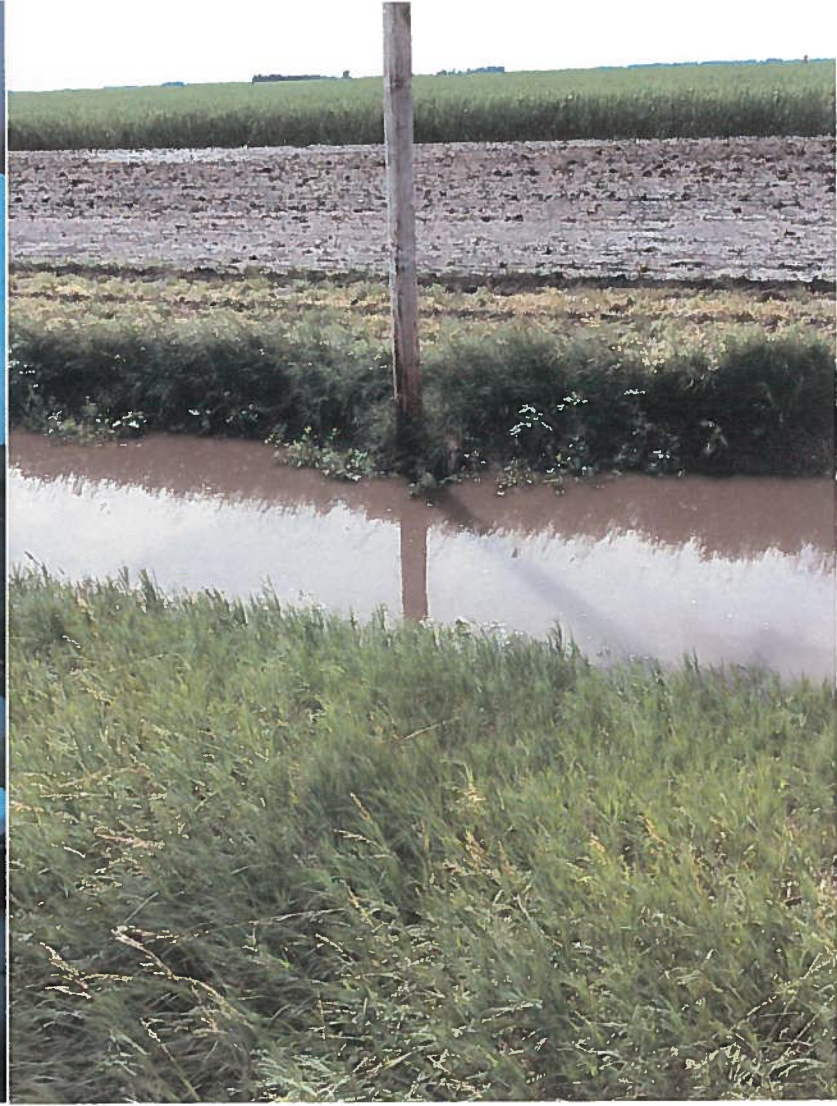
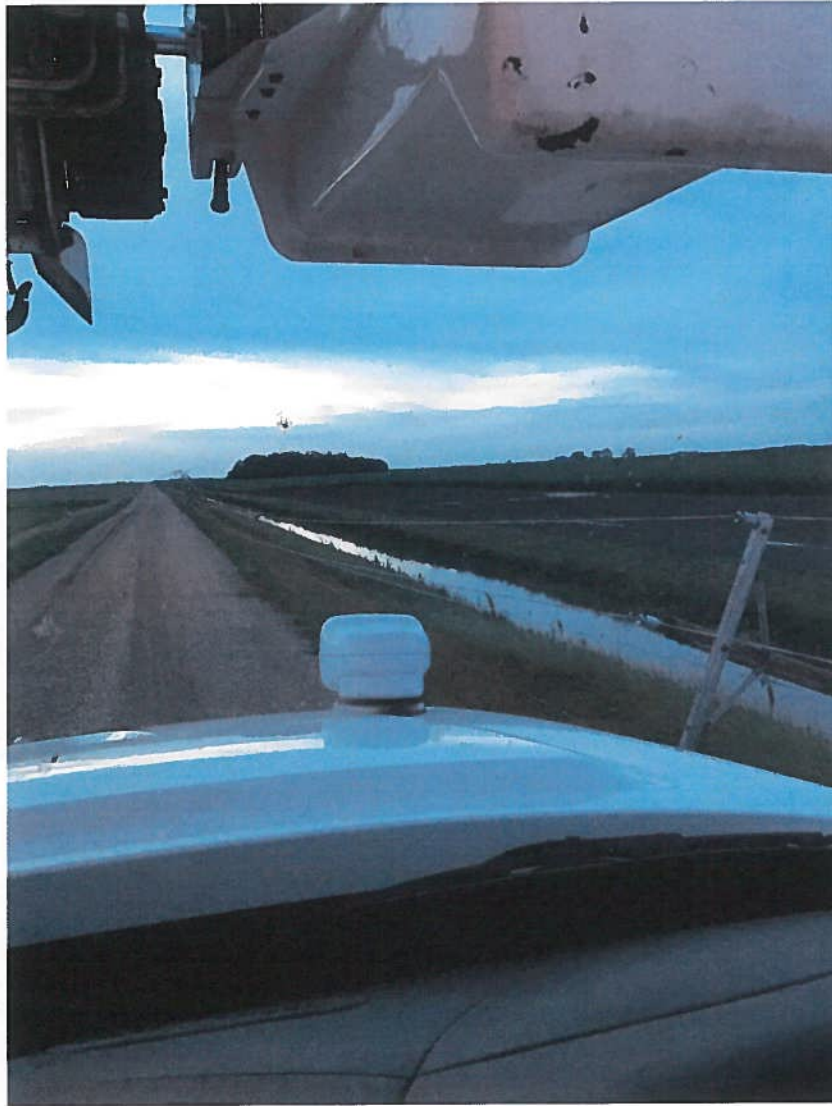
**D. OUTAGE REPORTS:**

- Traverse, Attached
- East River, Attached















**BOARD REPORT**  
**Safety and Compliance**  
**Traverse Electric Cooperative, Inc.**  
**June 2020**

**MANAGEMENT**

- ✓ Annual CDL Clearinghouse limited queries completed on 06/10/20
- ✓ Safety Recommendation – CDL Licenses and Medical Certificates on 06/18/20
- ✓ Annual CDL motor vehicle record check completed on 06/23/20
- ✓ Key dates for CDL drivers updated on 06/23/20

	Not Started	In Progress	Completed
<b>AWAIR/SIP Goals</b>			
1. Review OSHA Inspection Action Plan with Employees			✓
2. Continue Linemen Peer to Peer Inspections of PPE	✓		
3. Inspect All Extension/Electrical Cords			✓
4. Focus on Improving Safe Work Practices – “What Should We Do that We Aren’t Doing?”	✓		

**EDUCATION**

<u>Topic</u>	<u>Audience</u>	<u>Date</u>	<u>Presenter</u>
Monthly Newsletter – Move Over for Utility Vehicles	All employees	05/13/20	STAR
OSHA Action Plan	All employees	05-06	TEC
Cooperative Connections – Call Before You Dig	Members, Public	06/20	TEC
Monthly Poster – Reasonable Suspicion	All employees	06/01/20	STAR
Safety Bulletin Board – Drowsy Driving	All employees	06/01/20	STAR
Facebook – Vehicle URD Incident	Members, Public	06/10/20	TEC
Forklift Recertification	Operations	06/10/20	STAR
Bucket and Pole-Top Rescue	Operations	06/10/20	STAR
ERP annual exercise – Review of COVID Decisions/Actions/Plan	Select employees	06/10/20	STAR/TEC
Be Safe – Boom Tip Pole Guide Damage	Operations	06/15/20	STAR
MREA Safety Pallet and Download	All employees	06/23/20	MREA/TEC
Be Safe – Top 10 Mistakes Smart People Make	Operations/Tech	06/30/20	STAR

**INSPECTIONS**

- ✓ Monthly forklift inspection by TEC on 06/02/20
- ✓ Monthly fire extinguisher inspection by TEC on 06/02/20
- ✓ Crew observation by TEC on 06/01/20

**EVENTS (not including damage to poles/structures by public)**

No new events reported during this period. See table below.

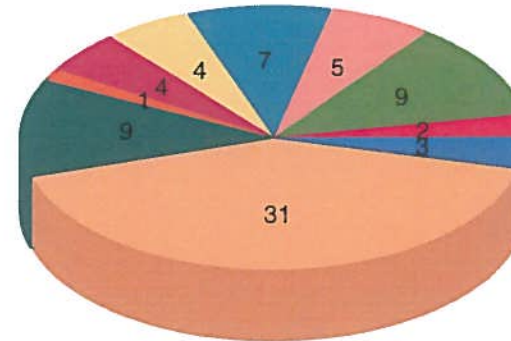
- ✓ Year-to-Date Injuries: 0 (includes no OSHA recordables)
- ✓ Year-to-Date Damage: 1 (includes no DOT reportable)
- ✓ Year-to-Date Near Miss: 0

Date	Type	Description	Actions
05/07/20	Oil Spill	Vehicle collision with padmount; oil spill cleanup	

## Outage Summary

6/1/2020 To 6/30/2020

Bird/Animal	3	4.0%
Planned/Construction	31	41.3%
Equipment Failure/Decay	9	12.0%
Member Problem	1	1.3%
Vehicle Accident	4	5.3%
Tree	4	5.3%
Wind	7	9.3%
Lightning	5	6.7%
Unknown	9	12.0%
Power Supplier	2	2.7%
Total:	75	100.0%



(Major Event Outages Highlighted Yellow)

### Outage List

Start Time	End Time	Cause	Equip Code	Device	Substation	Area	Comments	
6/1/20 9:37 am	6/1/20 10:37 am	Bird/Animal	Transformer Fuse		Beardsley	32 -26-4	Squirrel blew transformer fuse.	<a href="#">Locations Affected</a> 1
6/1/20 1:40 pm	6/1/20 3:12 pm	Equipment Failure/Decay	Arrestor		Sisseton	44 -19-1B	Arrestor blew takeoff fuse.	<a href="#">Locations Affected</a> 1
6/1/20 2:12 pm	6/1/20 3:40 pm	Member Problem	Transformer Fuse		Sisseton	44 -06-2	Electrician working on service crossed phases, blew transformer fuse.	<a href="#">Locations Affected</a> 1

Start Time	End Time	Cause	Equip Code	Device	Substation	Area	Comments	
6/2/20 4:10 am	6/2/20 5:42 am	Unknown	Line OCR		Wheaton	24 -26-01, 24 -26-2C, 24 -23-1A...	VFI at 16-20-4 open. Patrolled line. Found Nothing. Re-energized.	<a href="#">Locations Affected</a> 9
6/2/20 10:37 am	6/2/20 1:20 pm	Equipment Failure/Decay	Insulators		Wendell, Wheaton	19 -14-1, 19 -24-1, 19 -25-4...	Patrolled line. Burnt up bell on A5 in Lankow's line.	<a href="#">Locations Affected</a> 12
6/2/20 10:37 am	6/2/20 2:10 pm	Equipment Failure/Decay	Insulators		Wendell, Wheaton	19 -02-3A, 19 -03-3, 19 -15-3...	Patrolled line. Found burnt up bell on A-5 in Lankows yard.	<a href="#">Locations Affected</a> 9
6/2/20 10:37 am	6/2/20 2:50 pm	Equipment Failure/Decay	Insulators		Wendell	20 -34-3	Patrolled line. Found burnt up bell on A5 in Lankow's yard.	<a href="#">Locations Affected</a> 1
6/2/20 4:25 pm	6/2/20 5:57 pm	Unknown	Line OCR		Sisseton	43 -19-2A, 47 -24-2, 43 -20-3...	Line fuse blown & OCR open-refused line & reset OCR. Line had 25T Fuse-out 20 T in. Found no problem on line.	<a href="#">Locations Affected</a> 15
6/2/20 7:37 pm	6/2/20 9:00 pm	Unknown	Line Fuse OH		Wendell	04 -04-1A, 05 -31-1A, 04 -09-3...	Patrolled line. Found nothing wrong. Refused.	<a href="#">Locations Affected</a> 15
6/3/20 11:55 am	6/3/20 1:23 pm	Bird/Animal	Transformer Fuse				Dead raccoon at bottom of pole. Installed pole wrap and refused transformer.	<a href="#">Locations Affected</a> 0
6/3/20 1:32 pm	6/3/20 1:36 pm	Planned/Constructi on	Jumper		Victor	39 -11-2H	Shut off to check connections	<a href="#">Locations Affected</a> 1
6/4/20 10:35 am	6/4/20 2:52 pm	Vehicle Accident	Other		Sisseton	47 -17-4A, 51 -35-0A, 51 -36-2B...	Vehicle hit 3 phase cabinet. Had to replace cabinet & 5 elbows.	<a href="#">Locations Affected</a> 40
6/4/20 10:35 am	6/4/20 12:43 pm	Vehicle Accident	Other		Sisseton	43A-04-3A, 43 -31-4, 43 -21-4...	Vehicle hit 3 phase cabinet. Had to replace cabinet & 5 elbows.	<a href="#">Locations Affected</a> 8

Start Time	End Time	Cause	Equip Code	Device	Substation	Area	Comments	
6/4/20 10:35 am	6/4/20 11:35 am	Vehicle Accident	Other		Sisseton	47 -05-4A, 47 -17-1B, 47 -20-L14...	Vehicle hit 3 phase cabinet. Had to replace cabinet & 5 elbows.	<a href="#">Locations Affected</a> 3
6/5/20 1:27 pm	6/5/20 1:40 pm	Planned/Construction	Line Fuse OH		Sisseton	51 -18-1	Had to replace line.	<a href="#">Locations Affected</a> 1
6/7/20 3:45 pm	6/7/20 4:53 pm	Wind	Jumper		Victor	34 -20-2	Jumper buried off/put on arrestor kit.	<a href="#">Locations Affected</a> 1
6/8/20 2:00 am	6/8/20 3:39 am	Lightning	Line Fuse OH		Sisseton	51-14-1A, 51 -14-1, 51-24-3...	Line fuse blown. Patrolled and refused.	<a href="#">Locations Affected</a> 3
6/8/20 5:52 am	6/8/20 9:22 am	Wind	Sub OCR		Graceville	14 -14-2, 14 -23-2A, 14 -22-2...	OCR in sub. Tree branch in line burned down phase, cleared jumper, energized 25 consumers. Fixed down phase & cut tree and put last 5 on.	<a href="#">Locations Affected</a> 30
6/8/20 6:01 am	6/8/20 7:44 am	Wind	Sub OCR		Graceville	14 -12-3, 14 -16-2A, 14 -10-2...	OCR in sub. Tree branch in line burned down phase, cleared jumper, energized 25 consumers. Fixed down phase & cut tree and put last 5 on.	<a href="#">Locations Affected</a> 27
6/8/20 8:47 am	6/8/20 9:20 am	Wind	Sub OCR		Graceville	14 -33-2A	OCR in sub. Tree branch in line burned down phase, cleared jumper, energized 25 consumers. Fixed down phase & cut tree and put last 5 on.	<a href="#">Locations Affected</a> 1
6/8/20 8:48 am	6/8/20 9:37 am	Planned/Construction	Transformer Fuse		Wendell	05 -06-1A	Had to shut off for electrician.	<a href="#">Locations Affected</a> 1
6/9/20 1:30 am	6/9/20 3:30 am	Lightning	Line Fuse OH		Beardsley	38 -10-L2, 38 -10-09, 38 -10-L6...	Fuse blown. Patrolled out. Trees are getting close.	<a href="#">Locations Affected</a> 17



Start Time	End Time	Cause	Equip Code	Device	Substation	Area	Comments	
6/9/20 2:54 am	6/9/20 4:35 am	Lightning	Line Fuse URD		Wheaton	25 -31-1, 25 -31-2, 25 -34-3...	Blown line fuse. Patrolled out. Couldn't find cause. Refused.	<a href="#">Locations Affected</a> 18
6/9/20 3:09 am	6/9/20 6:41 am	Wind	Line OCR		Wendell	03 -01-1, 03 -14-3, 04 -36-4...	Tree branch in line. Cleared.	<a href="#">Locations Affected</a> 11
6/9/20 4:30 am	6/9/20 5:43 am	Wind	Line OCR		Dumont	03 -32-1A, 03 -25-3, 03 -26-3...	Tree on line. Cleared. Threw in OCR.	<a href="#">Locations Affected</a> 17
6/9/20 7:00 am	6/9/20 8:47 am	Lightning	Line Fuse URD		Sisseton	50 -35-4A	Refused urd line fuse.	<a href="#">Locations Affected</a> 1
6/9/20 7:00 am	6/9/20 9:27 am	Lightning	Transformer Fuse		Dumont	01 -08-4	Blown transformer fuse.	<a href="#">Locations Affected</a> 1
6/9/20 7:00 am	6/9/20 8:21 am	Wind	Transformer Fuse		Dumont	03 -30-2	Cut trees around ovh transformer and made repair on consumer triplex.	<a href="#">Locations Affected</a> 1
6/9/20 11:49 am	6/9/20 1:58 pm	Tree	Line Fuse URD		Victor	39 -15-02, 39 -14-3, 39 -15-04A...	Tree fell on line. Removed tree and refused line.	<a href="#">Locations Affected</a> 16
6/9/20 1:47 pm	6/9/20 1:50 pm	Planned/Constructi on	Other		Wheaton	17 -18-2C, 17 -18-2A	Disconnect transformer to add another service & reconnect.	<a href="#">Locations Affected</a> 2
6/11/20 7:30 am	6/11/20 9:25 am	Equipment Failure/Decay	Transformer Failure		Victor	40 -04-1	Bad transformer. Changed transformer.	<a href="#">Locations Affected</a> 1
6/11/20 9:32 am	6/11/20 10:06 am	Planned/Constructi on	Transformer Failure		Victor	40 -04-1	Shut off to replace transformer.	<a href="#">Locations Affected</a> 1
6/11/20 11:09 am	6/11/20 1:39 pm	Planned/Constructi on	Jumper		Beardsley	22B-05-1B, 22B-05-06, 22B-05-0H...	Shut off for pole change.	<a href="#">Locations Affected</a> 5
6/12/20 8:22 am	6/12/20 1:16 pm	Planned/Constructi on	Transformer Fuse		Wendell	05 -06-1	Shut south service off fro electricians. opened load break switch in transformer.	<a href="#">Locations Affected</a> 1
6/12/20 1:50 pm	6/12/20 2:41 pm	Planned/Constructi on	Other		Graceville	15 -22-4, 15 -23-4	Planned outage for pole change.	<a href="#">Locations Affected</a> 2
6/14/20 9:38 am	6/14/20 10:49 am	Planned/Constructi on	Other		Wheaton	33 -13-3C	Planned outage. combined services.	<a href="#">Locations Affected</a> 1

Start Time	End Time	Cause	Equip Code	Device	Substation	Area	Comments	
6/14/20 3:00 pm	6/14/20 9:43 pm	Equipment Failure/Decay	Other		Graceville	14 -18-3, 22 -12-1, 22 -26-1...	Terminator on riser blew & cleared the jumper. Isolated terminator & backfed A phase.	<a href="#">Locations Affected</a> 10
6/14/20 4:20 pm	6/14/20 4:51 pm	Planned/Construction	Other		Graceville	14 -04-3	Line switching.	<a href="#">Locations Affected</a> 1
6/15/20 7:00 am	6/15/20 8:22 am	Tree	Line OCR		Wheaton	24 -114, 24 -20-4, 24 -05-2A...	Dead trees took tap down . Isolated tap, Energized, and put tap back up. Energized.	<a href="#">Locations Affected</a> 4
6/15/20 7:00 am	6/15/20 9:27 am	Tree	Line OCR		Wheaton	24 -19-3	Dead trees took tap down. Isolated tap, Energized and put tap back up. Energized.	<a href="#">Locations Affected</a> 1
6/15/20 11:16 am	6/15/20 1:45 pm	Planned/Construction	Line Fuse OH		Beardsley	22B-05-0Q, 22B-05-1, 22B-05-0G...	Planned for pole changeouts. Dead and grounded.	<a href="#">Locations Affected</a> 14
6/16/20 8:55 am	6/16/20 9:55 am	Bird/Animal	Transformer Fuse		Wendell	27 -24-2	Refused transformer & put on squirrel guard.	<a href="#">Locations Affected</a> 1
6/16/20 10:00 am	6/16/20 1:21 pm	Planned/Construction	Other		Beardsley	31 -32-2, 31 -32-3A	Adding ground rods to irrigation transformers per engineers.	<a href="#">Locations Affected</a> 2
6/16/20 11:27 am	6/16/20 11:56 am	Planned/Construction	Other		Beardsley	31 -32-4	Adding ground rods to irrigation transformers per engineers.	<a href="#">Locations Affected</a> 1
6/16/20 12:20 pm	6/16/20 2:28 pm	Unknown	Other		Beardsley	37 -14-3A	Missing phase at transformer. Blown cutout on riser pole.	<a href="#">Locations Affected</a> 1
6/16/20 2:03 pm	6/16/20 2:10 pm	Planned/Construction	Elbow URD		Sisseton	51 -17-4, 51 -16-1D, 51 -17-4A...	Installed VFI, pulled elbows to energize.	<a href="#">Locations Affected</a> 18
6/17/20 7:42 pm	6/17/20 9:16 pm	Power Supplier	Power Supplier		Wendell, Doran, Wheaton	11-23-1A, 04 -03-3, 05 -16-4B...	Wendell sub down. OTP problem.	<a href="#">Locations Affected</a> 285
6/18/20 2:40 am	6/18/20 4:06 am	Tree	Line Fuse OH		Beardsley	33 -21-2E, 33 -21-2A, 33 -21-00...	Tree on line took line fuse.	<a href="#">Locations Affected</a> 31

Start Time	End Time	Cause	Equip Code	Device	Substation	Area	Comments	
6/18/20 3:30 am	6/18/20 6:00 am	Equipment Failure/Decay	Line Fuse OH		Wheaton	25 -31-1, 25 -31-2, 25 -35-3...	Bad insulator. Went through OCR to line fuse. Patrolled out. Replaced insulators and ties on pole.	<a href="#">Locations Affected</a> 21
6/18/20 7:08 am	6/18/20 9:19 am	Unknown	Line OCR				Line out. Patrolled and did not find any problems. Reset OCR.	<a href="#">Locations Affected</a> 0
6/18/20 8:50 pm	6/18/20 9:40 pm	Unknown	Transformer Fuse		Victor	40 -13-4	Blown transformer fuse. Refused and held.	<a href="#">Locations Affected</a> 1
6/20/20 8:49 pm	6/20/20 9:55 pm	Power Supplier	Other		Beardsley, Graceville	30 -24-4, 32 -12-3A, 38 -01A-L5NE...	Vehicle hit an Ottertail Power transmission pole. Caused the Beardsley sub to go down.	<a href="#">Locations Affected</a> 662
6/21/20 6:18 am	6/21/20 7:04 am	Vehicle Accident	Pole		Victor	39 -02-1, 39 -11-2B, 39 -01-1B...	Pole was hit. Shut off line to clear the car. Pulled wire up and floated it. Pole needs to be replaced, still laying in the ditch with cows around it.	<a href="#">Locations Affected</a> 53
6/22/20 11:17 pm	6/23/20 12:46 am	Unknown	Cutout Failure		Victor	44 -12-1, 44 -01-1, 44 -13-2A...	Line fuse blown, patrolled line and found nothing. Refused and held.	<a href="#">Locations Affected</a> 4
6/23/20 8:19 am	6/23/20 11:55 am	Planned/Construction	Other				Planned outage for service change.	<a href="#">Locations Affected</a> 0
6/23/20 8:25 am	6/23/20 8:40 am	Planned/Construction	Other		Beardsley	33 -23-3	Shut down to fix bad connections to socket.	<a href="#">Locations Affected</a> 1
6/23/20 9:56 am	6/23/20 11:57 am	Planned/Construction	Other		Wheaton	18 -15-3	Disconnected service to change pole.	<a href="#">Locations Affected</a> 1
6/23/20 2:37 pm	6/23/20 2:41 pm	Planned/Construction	Other		Wheaton	17 -18-2D	Shut down to connect new service.	<a href="#">Locations Affected</a> 1
6/23/20 3:26 pm	6/23/20 3:30 pm	Planned/Construction	Other		Wheaton	17 -18-2D	Shut down second time to swap leads in socket.	<a href="#">Locations Affected</a> 1



Start Time	End Time	Cause	Equip Code	Device	Substation	Area	Comments	
6/24/20 12:55 pm	6/24/20 1:31 pm	Planned/Construction	Transformer Fuse		Doran	20 -29-3A, 20 -30-2A	Planned outage for pole change.	<a href="#">Locations Affected</a> 2
6/24/20 1:17 pm	6/24/20 1:50 pm	Planned/Construction	Other		Beardsley	33 -23-3	Shut down to check connections. Bad connection to socket.	<a href="#">Locations Affected</a> 1
6/25/20 8:02 am	6/25/20 8:06 am	Planned/Construction	Other		Beardsley	33 -21-0E	Meter pulled for service upgrade.	<a href="#">Locations Affected</a> 1
6/25/20 8:18 am	6/25/20 9:56 am	Planned/Construction	Other		Beardsley	33 -21-0E	Meter pulled for service upgrade.	<a href="#">Locations Affected</a> 1
6/25/20 9:24 am	6/25/20 9:56 am	Planned/Construction	Transformer Fuse		Beardsley	33 -21-0F	Shut down transformer to install secondary for service upgrade.	<a href="#">Locations Affected</a> 1
6/25/20 10:50 am	6/25/20 12:26 pm	Planned/Construction	Jumper		Beardsley	30 -36-0E, 30 -36-0F	Disconnected service to change transformer & service upgrade.	<a href="#">Locations Affected</a> 2
6/25/20 11:44 am	6/25/20 12:27 pm	Unknown	Line OCR		Dumont, Wheaton	08 -09-4A, 08 -06-2, 08 -09-4...	One phase did not hold during line switching.	<a href="#">Locations Affected</a> 3
6/27/20 5:19 pm	6/27/20 6:11 pm	Unknown	Line Fuse OH		Victor	39 -29-00, 39 -29-4E, 39 -32-06...	Cut out was blown. Refused to 15 and held.	<a href="#">Locations Affected</a> 20
6/29/20 5:54 am	6/29/20 8:01 am	Equipment Failure/Decay	Cutout Failure		Wheaton	17 -04-4A, 27 -25-3, 27 -26-4...	Bad cutout caught pole on fire.	<a href="#">Locations Affected</a> 25
6/29/20 5:54 am	6/29/20 10:27 am	Equipment Failure/Decay	Cutout Failure		Wheaton	17 -16-3, 17 -17-1, 17 -17-1A...	Bad cutout caught pole on fire. Needed to change pole	<a href="#">Locations Affected</a> 17
6/29/20 7:23 am	6/29/20 8:02 am	Planned/Construction	Other		Wheaton	18 -15-1, 18 -14-2, 18 -114...	Planned outage to change pole that caught on fire due to bad cutout.	<a href="#">Locations Affected</a> 12
6/29/20 7:23 am	6/29/20 10:27 am	Planned/Construction	Other		Wheaton	17 -03-4, 18 -34-2, 17 -18-2J...	Planned outage to change pole that caught on fire due to bad cutout.	<a href="#">Locations Affected</a> 37
6/30/20 9:07 am	6/30/20 11:22 am	Planned/Construction	Other		Victor	43 -12-3	Planned outage for pole change.	<a href="#">Locations Affected</a> 1
6/30/20 10:52 am	6/30/20 11:51 am	Planned/Construction	Jumper		Wheaton	18 -114, 18 -14-2	Shut line off to change poles.	<a href="#">Locations Affected</a> 2



Start Time		End Time		Cause	Equip Code	Device	Substation	Area	Comments	
6/30/20	10:52 am	6/30/20	2:15 pm	Planned/Construction	Jumper		Wheaton	18 -14-3	Shut line off to change poles.	<a href="#">Locations Affected</a> 1
6/30/20	2:35 pm	6/30/20	3:03 pm	Planned/Construction	Other		Beardsley	33 -29-04A	Meter pulled to work on service.	<a href="#">Locations Affected</a> 1



# Outage Report

07-01-2020

Substation	Off Date	On Date	Outage Duration (Minutes)	Customer Count	Customer Hours Off	Coop	Codes	Comments
Eros	07/01/2020 02:10	07/01/2020 02:10	0	239	0	Sioux Valley Energy	Thunderstorm	Thunderstorm.
Garretson	07/01/2020 02:10	07/01/2020 02:10	0	657	0	Sioux Valley Energy	Thunderstorm	Thunderstorm.
Trent	07/01/2020 02:10	07/01/2020 02:10	0	411	0	Sioux Valley Energy	Thunderstorm	Thunderstorm.
Dumont	07/01/2020 02:46	07/01/2020 02:46	0	164	0	Traverse	Thunderstorm, Power Supplier	Thunderstorm



# Distribution Substation Operations Summary Report

07-08-2020

Event Id	Substation	Coop	Off Date	On Date	Outage Duration (Minutes)	Customer Count	Customer Hours Off	Operating Substation	Operating Device	DevOp Count	Outage Codes	DevOp Codes	Comments
22203	Hillhead	Lake Region	07/08/2020 01:30	07/08/2020 01:30	0	693	0	OTPC	1	1	Thunderstorm, Power Supplier	Thunderstorm, Power Supplier	Weather in the area.
22203	Veblen	Traverse, Lake Region	07/08/2020 01:30	07/08/2020 01:30	0	72	0	OTPC	1	1	Thunderstorm, Power Supplier	Thunderstorm, Power Supplier	Weather in the area.
22204	Wendell	Traverse	07/08/2020 03:13	07/08/2020 04:03	50	205	170.83	OTPC	1	1	Power Supplier, Thunderstorm	Thunderstorm, Power Supplier	Weather in the area.
22205	Beardsley	Traverse	07/08/2020 23:48	07/08/2020 23:48	1440	630	15120	OTPC	1	1	Power Supplier, Thunderstorm	Thunderstorm, Power Supplier	Thunderstorm



# Distribution Substation Operations Summary Report

07-09-2020

Event Id	Substation	Coop	Off Date	On Date	Outage Duration (Minutes)	Customer Count	Customer Hours Off	Operating Substation	Operating Device	DevOp Count	Outage Codes	DevOp Codes	Comments
22205	Beardsley	Traverse	07/09/2020 00:11	07/09/2020 00:11	0	630	0	OTPC	1	1	Thunderstorm, Power Supplier	Thunderstorm, Power Supplier	Thunderstorm
22205	Wendell	Traverse	07/09/2020 00:46	07/09/2020 00:46	0	205	0	OTPC	1	1	Thunderstorm, Power Supplier	Thunderstorm, Power Supplier	Thunderstorm
22205	Doran	Traverse	07/09/2020 00:50	07/09/2020 00:50	0	213	0	OTPC	1	1	Power Supplier, Thunderstorm	Thunderstorm, Power Supplier	Thunderstorm
22205	Doran	Traverse	07/09/2020 00:52	07/09/2020 00:52	0	213	0	OTPC	1	1	Thunderstorm, Power Supplier	Thunderstorm, Power Supplier	Thunderstorm
22205	Doran	Traverse	07/09/2020 01:07	07/09/2020 01:07	0	213	0	OTPC	1	1	Power Supplier, Thunderstorm	Thunderstorm, Power Supplier	Thunderstorm
22205	Wendell	Traverse	07/09/2020 01:07	07/09/2020 01:07	0	205	0	OTPC	1	1	Power Supplier, Thunderstorm	Thunderstorm, Power Supplier	Thunderstorm



# Distribution Substation Operations Summary Report

07-16-2020

Event Id	Substation	Coop	Off Date	On Date	Outage Duration (Minutes)	Customer Count	Customer Hours Off	Operating Substation	Operating Device	DevOp Count	Outage Codes	DevOp Codes	Comments
22219	Ferney	Northern	07/16/2020 04:01	07/16/2020 04:01	0	343	0	Groton (WAPA)	1352	2	Weather, Thunderstorm	Weather, Thunderstorm	Weather in the area.
22219	Mansfield	Northern	07/16/2020 04:01	07/16/2020 04:01	0	395	0	Groton (WAPA)	1352	2	Weather, Thunderstorm	Weather, Thunderstorm	Weather in the area.
22220	Britton	Lake Region	07/16/2020 04:37	07/16/2020 04:37	0	438	0	Bristol	1252	1	Weather, Thunderstorm	Thunderstorm, Weather	Weather in the area.
22220	Langford	Lake Region	07/16/2020 04:37	07/16/2020 04:37	0	298	0	Bristol	1252	1	Thunderstorm, Weather	Thunderstorm, Weather	Weather in the area.
22221	Hillhead	Lake Region	07/16/2020 07:26	07/16/2020 07:26	0	693	0	OTPC	1	1	Weather, Thunderstorm	Weather, Thunderstorm	Thunderstorm moving through the area
22221	Veblen	Traverse, Lake Region	07/16/2020 07:26	07/16/2020 07:26	0	72	0	OTPC	1	1	Weather, Thunderstorm	Weather, Thunderstorm	Thunderstorm moving through the area
22222	Wheaton	Traverse	07/16/2020 08:11	07/16/2020 08:11	0	347	0	OTPC	1	1	Thunderstorm, Weather	Thunderstorm, Weather	Thunderstorm moving through the area



# Distribution Substation Operations Summary Report

07-17-2020

Event Id	Substation	Coop	Off Date	On Date	Outage Duration (Minutes)	Customer Count	Customer Hours Off	Operating Substation	Operating Device	DevOp Count	Outage Codes	DevOp Codes	Comments
22224	Hillhead	Lake Region	07/17/2020 22:55	07/17/2020 22:55	0	693	0	OTPC	1	1	Power Supplier, Thunderstorm	Thunderstorm, Power Supplier	Thunderstorm
22224	Veblen	Lake Region, Traverse	07/17/2020 22:55	07/17/2020 22:55	0	72	0	OTPC	1	1	Thunderstorm, Power Supplier	Thunderstorm, Power Supplier	Thunderstorm
22227	Wendell	Traverse	07/17/2020 22:56	07/17/2020 22:56	0	205	0	OTPC	1	1	Thunderstorm, Power Supplier	Power Supplier, Thunderstorm	Thunderstorm
22224	Hillhead	Lake Region	07/17/2020 23:03	07/17/2020 23:07	4	693	46.2	OTPC	1	1	Thunderstorm, Power Supplier	Thunderstorm, Power Supplier	Thunderstorm
22224	Veblen	Traverse, Lake Region	07/17/2020 23:03	07/18/2020 01:04	121	72	145.2	OTPC	1	1	Thunderstorm, Power Supplier	Thunderstorm, Power Supplier	Thunderstorm
22225	Peever	Whetstone	07/17/2020 23:29	07/17/2020 23:29	0	500	0	Roberts County	5152	1	Thunderstorm	Thunderstorm	Thunderstorm, 1 op.
22225	Sisseton	Traverse	07/17/2020 23:29	07/17/2020 23:29	0	543	0	Roberts County	5152	1	Thunderstorm	Thunderstorm	Thunderstorm, 1 op.
22225	Victor	Traverse	07/17/2020 23:29	07/17/2020 23:29	0	483	0	Roberts County	5152	1	Thunderstorm	Thunderstorm	Thunderstorm, 1 op.
22225	Peever	Whetstone	07/17/2020 23:31	07/17/2020 23:31	0	500	0	Roberts County	5152	1	Thunderstorm	Thunderstorm	Thunderstorm, 2 ops.
22225	Sisseton	Traverse	07/17/2020 23:31	07/17/2020 23:31	0	543	0	Roberts County	5152	1	Thunderstorm	Thunderstorm	Thunderstorm, 2 ops.
22225	Victor	Traverse	07/17/2020 23:31	07/17/2020 23:31	0	483	0	Roberts County	5152	1	Thunderstorm	Thunderstorm	Thunderstorm, 2 ops.